

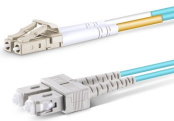
# **Zambian Cable Tray Operation Procedures**



## Zambian Cable Tray Operation Procedures



Our R-Line Cable Tray and Ladders are meticulously designed to optimize cable routing and organization in diverse industrial and commercial settings. Crafted with precision from high ...



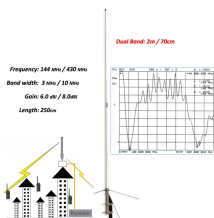
This method statement covers the site installation of the cable tray & ladders and the requirements of checks to be carried out.



Return To Login Page Login Using QuickCard



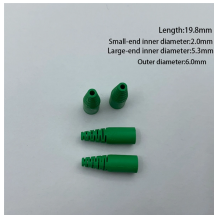
This document provides a method statement for installing cable trays and trunking systems for building electrical services.



This document provides a method statement for installing cable trays and trunking systems for building electrical services.



Below is the detailed cable tray installation method statement not only for cable tray but also applicable for GI ladder and trunking for indoor and outdoor applications and in service rooms like pump rooms, ...



Only approved and undamaged cable trays and accessories (e.g., bends, tees, reducers, covers, supports, hangers, bolts) shall be used for installation.



login.generic\_login.privacy\_policy login.help login  
owner\_check login.generic\_login.remote\_login  
login.generic\_login.direct\_login



This Method Statement covers the installation of Cable Trays. This procedure is to define the method used to ensure that Cable Trays have been installed as per the contract requirement.



Face Login Login



Below is a complete method statement for installation of cable tray, cable trunking and cable ladders in compliance with project specifications and approved material submittals.



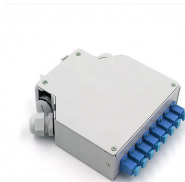
This procedure to clear the method of the supply, installations Cable Tray and Trunking System for the project. This document details the Cable Tray and Trunking System Installation : 1. ...



1.0 This method statement will serve as a minimum guideline to carry out the Cable Tray Installation activities for commercial buildings, plants and refineries in accordance with Project Drawings and ...



login.or\_sign\_in\_using\_following\_services  
login.clsLink\_inc



The cable tray shall be installed with a 40mm minimum space between the structure and the tray. All cable shall be securely fixed to the tray, work and the complete installation must be carried out in a ...



ClassLink Login Remote Login Using QuickCard

## Contact Us

For more information, pricing, or custom network solutions, please contact us:

Website: <https://hashherbcafe.co.za>

Email: [hello@hashherbcafe.co.za](mailto:hello@hashherbcafe.co.za)

Phone: +27 63 814 7295

Address: 15 Galaxy Road, Linbro Business Park, Johannesburg, 2065, South Africa

This document is for informational purposes only. Specifications subject to change without notice.

