

HHC Networks & Smart City Solutions

Xrm2 distribution box



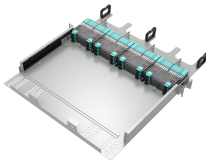
Xrm2 distribution box



The XRM-OPTO is a front-panel adapter card designed for use with Alpha Data's PMC cards. These include the ADM-XP, XRC4FX, XRC5T1 and XRC5T2. Low-profile Copper/Optical transceivers are ...



This product is mainly suitable for industrial and mining enterprises, production workshops, building distribution, etc. It controls motors, electrical equipment, and lighting in AC 50Hz, 380/220V three ...



Designed for the Alpha Data PMC/XMC family of products, the XRM2-OPT provides external connectivity for the Multi-Gigabit Tranceivers (MGTs) on the FPGA board.



The XRM2-DA5 is an I/O Module which provides dual channel ADC and single channel DAC interfaces. The XRM2-DA5 is designed for use with Alpha Data's XRM2 compliant carrier cards.



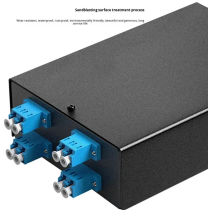
This product is mainly suitable for industrial and mining enterprises, production workshops, building distribution, etc. It controls motors, electrical equipment, and lighting in AC 50Hz, 380/220V three ...



The XRM2-OPT is an XRM2 I/O Module which provides a variety of multi-gigabit communications options. Designed for the Alpha Data PMC/XMC family of products, the XRM2-OPT provides external ...



Energy consumption during the use of XRM00, XRM1, XRM2 and XRM3 have been estimated assuming 10 years when operated 3650 hours per year (10 hours per day), load factor 70%.



Designed for the Alpha Data PMC/XMC family of products, the XRM2-OPT provides external connectivity for the Multi-Gigabit Transceivers (MGTs) on the FPGA board.



The XRM2-RF-ATD is an XRM2 I/O module, providing two full duplex RF channels at center frequencies between 70 MHz and 6 GHz. Intended for use in FPGA-based general-purpose radio systems.



The XRM2-OPT is an XRM2 I/O Module which provides a variety of multi-gigabit communications options. Designed for the Alpha Data PMC/XMC family of products, the XRM2-OPT provides external ...

Contact Us

For more information, pricing, or custom network solutions, please contact us:

Website: <https://hashherbcafe.co.za>

Email: hello@hashherbcafe.co.za

Phone: +27 63 814 7295

Address: 15 Galaxy Road, Linbro Business Park, Johannesburg, 2065, South Africa

This document is for informational purposes only. Specifications subject to change without notice.

