

Working principle of photovoltaic converter module



Overview

Solar PV systems generate electricity by absorbing sunlight and using that light energy to create an electrical current. There are many photovoltaic cells within a single solar module, and the current created by all of the cells together adds up to enough electricity to help power. A PV Cell or Solar Cell or Photovoltaic Cell is the smallest and basic building block of a Photovoltaic System (Solar Module and a Solar Panel). These cells vary in size ranging from about 0. These are made up of solar photovoltaic material that converts solar radiation into. Solar Cell Definition: A solar cell (also known as a photovoltaic cell) is an electrical device that transforms light energy directly into electrical energy using the photovoltaic effect. Here's an explanation of the typical structure of a silicon-based PV cell: Top Contact: This is the topmost layer of the PV cell, often. A solar PV module converts sunlight into electricity using photovoltaic cells, allowing homes, businesses, and large solar farms to generate power without fossil fuels. It also outlines the electrical modeling, key operating characteristics, and performance curves of PV cells under varying environmental conditions.

Working principle of photovoltaic converter module



We begin with an over-view and then explain the rudimentary physical process of the technology, the photovoltaic effect. Next, we consider how scientists and engineers have harnessed this process to ...



When the semiconductor is exposed to light, it absorbs the light's energy and transfers it to negatively charged particles in the material called electrons. This extra energy allows the electrons to flow ...



A solar PV module is an assembly of multiple photovoltaic cells that convert sunlight into direct current (DC) electricity. These cells are usually made from crystalline silicon and are ...



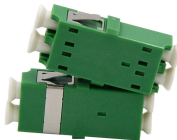
A photovoltaic (PV) cell, commonly known as a solar cell, is a device that directly converts light energy into electrical energy through the photovoltaic effect.



Solar PV modules work on the principle of photovoltaic effect, which is the process of converting sunlight into electricity. When sunlight hits the photovoltaic cells, it releases electrons, ...



Solar PV systems generate electricity by absorbing sunlight and using that light energy to create an electrical current. There are many photovoltaic cells within a single solar module, and the ...



A solar cell (also known as a photovoltaic cell or PV cell) is defined as an electrical device that converts light energy into electrical energy through the photovoltaic effect.



Solar PV systems generate electricity by absorbing sunlight and ...



The article provides an overview of photovoltaic (PV) cell, explaining their working principles, types, materials, and applications. It also outlines the electrical modeling, key operating characteristics, and ...



A solar panel is composed of multiple interconnected solar cells. When sunlight hits these cells, the photovoltaic effect generates a direct current (DC) electrical flow.



Photovoltaic modules work by harnessing the energy from sunlight and converting it into electricity. When sunlight hits the solar cells within the module, it excites the electrons in the cells, ...

Contact Us

For more information, pricing, or custom network solutions, please contact us:

Website: <https://hashherbcafe.co.za>

Email: hello@hashherbcafe.co.za

Phone: +27 63 814 7295

Address: 15 Galaxy Road, Linbro Business Park, Johannesburg, 2065, South Africa

This document is for informational purposes only. Specifications subject to change without notice.

