

Wiring of electrical distribution boxes in Kenya buildings



Overview

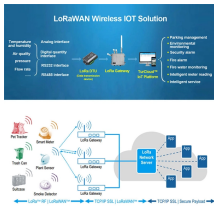
Learn how to wire a distribution board in Kenya with this simple step-by-step guide by Tronic. Ensure safe, correct, and reliable electrical connections. A typical DB. Put up an electrical distribution board From the power inlet point, mount an electrical distribution panel of your preferred size, design and color. It covers key components, their functions, and the management of power sources, ensuring efficient and reliable energy supply to various.



Wiring of electrical distribution boxes in Kenya buildings



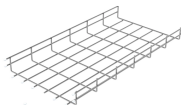
It is helpful for every DIY-minded homeowner to have at least a basic understanding of electrical work. This article will attempt to reveal some of the mystery surrounding the maze of wiring ...



Explore the technical report on Main Distribution Board (MDB) design and outdoor distribution boards for efficient electrical power management.



From the power inlet point, mount an electrical distribution panel of your preferred size, design and color. As illustrated by the name, the electrical distribution board is an integral part that is used to distribute ...



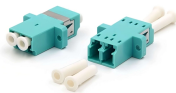
This Kenya Standard was prepared by the Electrical Installations and Distribution Systems Technical Committee under the guidance of the Standards Projects Committee, and it is in accordance with the ...



The process involves disconnecting the power supply, removing the old panel, and installing a new one with updated wiring and circuit breakers. Advanced panels may also include ...



Read our guide to electrical wiring, covering layout, materials, safety, and planning for a safe, efficient home system.



Learn the basics of electrical wiring for the home, including wire and cable types, wire color codes and labeling, and essential wiring techniques.



Tronic LV boards have been deployed in various facilities across Kenya to distribute energy throughout buildings and factories while guarding against electrical overloads and short circuits.



Contact us today for professional electrical wiring services Kenya that prioritize your safety, meet your needs, and exceed your expectations. Trust Kenya's electrical experts to power your success with ...



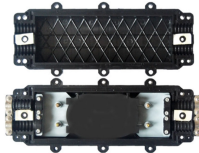
Electrical wiring is an electrical installation of cabling and associated devices such as switches, distribution boards, sockets, and light fittings in a structure. Wiring is subject to safety standards for ...



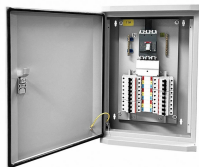
Get safe, reliable electrical wiring and rewiring services in Des Moines from our licensed and experienced electricians. We handle upgrades, repairs, and new installations for homes and ...



Conquer your fear of working with electrical wiring BY understanding the basics of electrical work and installing 3-switch wiring. Play it smart and stay safe when attempting DIY electrical projects. Here''s ...



From open-plan offices to complex commercial centers, our designs cover structured wiring, lighting, load distribution, and emergency systems. Proper design reduces installation errors and ensures ...



Learn how to wire a distribution board in Kenya with this simple step-by-step guide by Tronic. Ensure safe, correct, and reliable electrical connections.



Whether you want to understand how your home''s wiring works, add a new light switch, or replace an outlet, learning the basics of electrical wiring is essential for every homeowner. This article covers all ...



Getting electricity connected to your premises in Kenya involves careful planning and adherence to KPLC''s guidelines. Understanding the process, costs, and safety measures ensures a ...



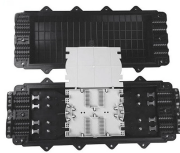
The document is intended to help electrical engineers and supervisors install distribution boards for electrical projects according to contract requirements and specifications.



When it comes to Electrical Connectors & Wiring Devices, you can count on Grainger. Supplies and solutions for every industry, plus easy ordering, fast delivery and 24/7 customer support.



This page contains wiring diagrams for household light switches and includes: a switch loop, single-pole switches, light dimmer, and a few choices for wiring an outlet/switch combo device.



The Complete Guide to Electrical Wiring (Current with 2014-2017 Electrical Codes) by Black+Decker



Getting electricity connected to your premises in Kenya involves careful planning and adherence to KPLC's guidelines. Understanding the ...

Contact Us

For more information, pricing, or custom network solutions, please contact us:

Website: <https://hashherbcafe.co.za>

Email: hello@hashherbcafe.co.za

Phone: +27 63 814 7295

Address: 15 Galaxy Road, Linbro Business Park, Johannesburg, 2065, South Africa

This document is for informational purposes only. Specifications subject to change without notice.

