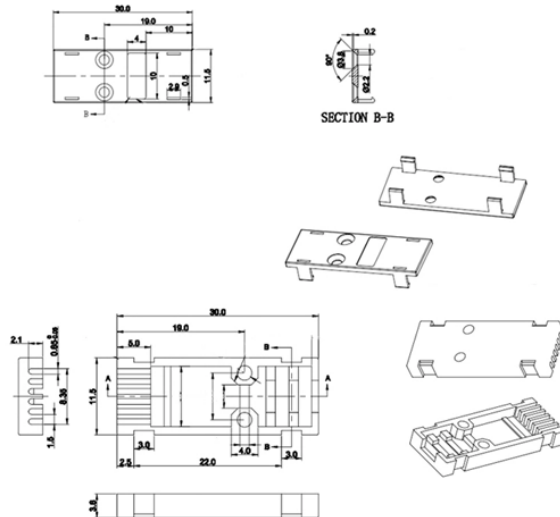


## Wiring of Southern European Electrical Cabinets



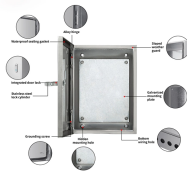
## Wiring of Southern European Electrical Cabinets



Learn the European wiring diagram symbols used for electrical circuits. Understand the symbols to decipher diagrams and troubleshoot electrical issues.



Our services include the design, manufacturing, and assembly of high-quality wiring systems for various industrial sectors, with a constant focus on safety, reliability, and performance.



Discover the key standards for industrial electrical cabinet wiring, including wiring diagrams, circuit breakers, and safety practices with Groupe BEI.



We look at your electrical engineering designs or you describe your requirements to us, and we'll give you a quote. We either get production components ourselves, or you can supply them to us.



Understanding European electrical drawings doesn't have to be difficult, though. With a few key points, you can learn to make sense of the ...



Proper transport, storage, installation, assembly, commissioning, operation and maintenance are required to ensure that the products operate safely and without any problems. The permissible ...



When you start any electrical cabinet project, you want a process that's smooth, safe, and reliable. That's where Linkwell's DIN rail installation guide ...



Getting familiar with a European house wiring diagram is an important part of properly wiring a building or home. Each diagram is designed to make sure the wiring complies with all safety ...



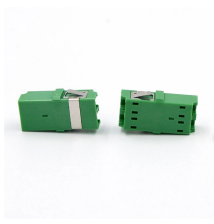
When wire and cable is manufactured in a CENELEC country and is marked with the HAR approval on the jacket, it may be used interchangeably in the member countries.



File:European plug and sockets, UE standard, EU plug and socket wiring diagram, schuko, french socket, cee 7-7.jpg



When you start any electrical cabinet project, you want a process that's smooth, safe, and reliable. That's where Linkwell's DIN rail installation guide comes in handy.



In this video, we'll guide you through the process of wiring your bulbs, convenience outlet, and aircon outlet, while providing helpful tips and tricks along the way.



Learn about European 230v wiring diagram, including the different components and connections needed for electrical installations in Europe.

## Contact Us

For more information, pricing, or custom network solutions, please contact us:

Website: <https://hashherbcafe.co.za>

Email: [hello@hashherbcafe.co.za](mailto:hello@hashherbcafe.co.za)

Phone: +27 63 814 7295

Address: 15 Galaxy Road, Linbro Business Park, Johannesburg, 2065, South Africa

This document is for informational purposes only. Specifications subject to change without notice.

