

Why is the beam splitter 18



Overview

A beam splitter reflects some of the infrared light and lets the rest pass through. This creates two separate paths, which later overlap and interfere. A beam splitter or beamsplitter is an optical device that splits a beam of light into a transmitted and a reflected beam. It is a crucial part of many optical experimental and measurement systems, such as interferometers, also finding widespread application in fibre optic telecommunications. Beamsplitters are often classified according to their construction: cube or plate. □□ For purchasing, use the RP Photonics Buyer's Guide for beam splitters. Newport offers a wide variety of Beamsplitters in various shapes.

Why is the beam splitter 18



Our beam splitters are made from high grade glass material with laser grade surface flatness & surface quality for tighter tolerance on the splitting ratio.



Beamsplitters are generally effective at reflecting s-polarization but they are not as effective at preventing p-polarization from reflecting. This occurs because when s-polarized light hits the ...



For optimum results, the incident light beam should enter the beamsplitter through the prism that has been coated with reflecting film so that reflection occurs before ...



A beam splitter reflects some of the infrared light and lets the rest pass through. This creates two separate paths, which later overlap and interfere. This interference holds information ...



A beam splitter or beamsplitter is an optical device that splits a beam of light into a transmitted and a reflected beam. It is a crucial part of many optical experimental and measurement systems, such as ...



A diffractive Beam Splitter can be designed to generate either a 1-dimensional beam array ($1 \times N$) or a 2-dimensional beam matrix ($M \times N$). Design flexibility allows to obtain any configuration of orders and ...



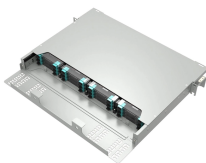
The elements of the beam splitter transformation matrix B are determined using the assumption that the beamsplitter is lossless. While a beamsplitter is never lossless, it is a good approximation for most ...



A beamsplitter is an optical device used to divide a beam of light into two or more separate beams, typically by reflecting a portion of the incident light while transmitting the remainder.



For optimum results, the incident light beam should enter the beamsplitter through the prism that has been coated with reflecting film so that reflection occurs before the beam encounters the optical ...



Cube beamsplitters eliminate beam displacement without being fragile. They are easy to mount and mechanically durable, but the presence of an interface can limit power handling if epoxy is used for ...



Beam splitters are devices for splitting a laser beam into two or more beams. There are different types, including polarizing and non-polarizing versions.

Contact Us

For more information, pricing, or custom network solutions, please contact us:

Website: <https://hashherbcafe.co.za>

Email: hello@hashherbcafe.co.za

Phone: +27 63 814 7295

Address: 15 Galaxy Road, Linbro Business Park, Johannesburg, 2065, South Africa

This document is for informational purposes only. Specifications subject to change without notice.

