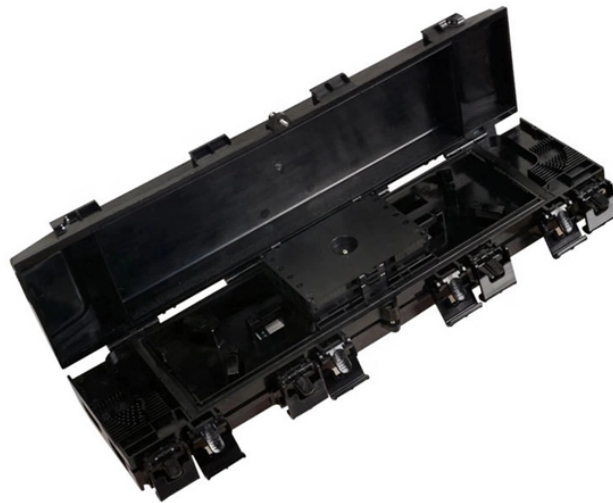


## Wholesale PAM4 standalone switches



## Wholesale PAM4 standalone switches



Efficiently manage network connections with the 100 Gb/s QSFP28 transceiver. Features PAM4 modulation, 100km reach, and 100G Ethernet protocol for high-speed data transmission over ...



PAM4 effectively doubles the data rate for a link bandwidth at the expense of reduced signal to noise ratio (SNR). PAM4 is used in 400GE, 800GE, and 1.6T Ethernet as well as PCIe 6.0® and other ...



Best Price Assurance, Bulk Savings, Trusted Worldwide. The solution leverages 400G and 400G DACs with near-zero power consumption and low latency to provide flexible, easy-to-manage network ...



Operating at 224Gb/s PAM4 signaling per channel, this connector features an optimized footprint ensuring superior signal integrity, with less than 2dB of loss at 53GHz



The DCP-M family comprises four models for either 8 or 40 channels, dedicated for either 100G DWDM PAM4 traffic or for applications with any mix of PAM4, NRZ and coherent 100/400G channels.



How To Choose PAM4 Optical Transceiver Wholesale? Selecting the right PAM4 optical transceiver supplier requires a meticulous evaluation of several critical factors.



800G switches have made significant leaps forward in data networking by leveraging 112G and 224G PAM4 SerDes technology. The 112G PAM4 SerDes is designed to transmit data at 112 gigabits per ...



Amphenol's Rugged 256 Channel Ethernet Switch Box is liquid cooled and configurable for system connectivity, speeds, port types, and interoperation with various high-speed media converters and ...



Amphenol's Rugged 256 Channel Ethernet Switch Box is liquid cooled and configurable for system connectivity, speeds, port types, and interoperation with ...



8 × 56 Gb/s PAM-4 Pass-Through mode PHY. It supports both the PAM-4 and NRZ data formats. It supports Retimer, Forward, and Reverse Gearbox modes. It also supports 1G, 10G, 25G, 40G, 50G, ...



800G OSFP Switch-to-400G BlueField-3 + ConnectX-7 with QSFP112 LinkX cables, transceivers, ConnectX-7 and BlueField-3 DPUs contain both InfiniBand and Ethernet protocols.

## Contact Us

For more information, pricing, or custom network solutions, please contact us:

Website: <https://hashherbcafe.co.za>

Email: [hello@hashherbcafe.co.za](mailto:hello@hashherbcafe.co.za)

Phone: +27 63 814 7295

Address: 15 Galaxy Road, Linbro Business Park, Johannesburg, 2065, South Africa

This document is for informational purposes only. Specifications subject to change without notice.

