

## What types of electrical distribution boxes must be covered with protective panels

Length:14.5mm  
Small-end inner diameter:2.0mm  
Large-end inner diameter:3.5mm  
Outer diameter:5.2mm



### Overview

The National Electrical Code (NEC) provides comprehensive safety standards for electrical installations, including requirements for electrical panels (main service panels and subpanels or breaker box). NEC Article 408. Switchboards and panelboards are often called “the guts” of a premises wiring system. For that reason, you should invest the time it takes to become familiar with them. This protective layer is a non-negotiable safety component that prevents accidental contact with the high-voltage parts beneath. Covers also protect internal mechanisms from being exposed to dust, dirt, and moisture. Missing breakers inside an electrical panel must be covered with a. Discover the 7 essential types of electrical panel enclosures and learn how to choose the right protection for your specific environment, from basic indoor to hazardous location applications.

## What types of electrical distribution boxes must be covered with pr



Discover the 7 essential types of electrical panel enclosures and learn how to choose the right protection for your specific environment, from basic indoor to hazardous location applications.



Type 7 and 10 enclosures are designed to contain an internal explosion without causing an external hazard. Type 8 enclosures are designed to prevent combustion through the use of oil-immersed ...



Switchboards, panelboards, and distribution boards installed for the control of light and power circuits, and motor control centers shall be located in dedicated spaces and protected from damage.



The National Electrical Code (NEC) provides comprehensive safety standards for electrical installations, including requirements for electrical panels (main service panels and subpanels or breaker box).



Discover the 7 essential types of electrical panel enclosures and learn how to choose the right protection for your specific environment, from basic indoor to hazardous ...



The Occupational Safety and Health Administration requires sufficient access and working space around electrical equipment such as electrical panels and transformers serving 600 volts or less.



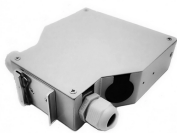
An electrical panel cover, often called a “dead front,” is the metal barrier that fits over the circuit breakers inside the main electrical box. This protective layer is a non-negotiable safety ...



Panels intended for outdoor use must be housed in a NEMA-rated enclosure that protects against moisture and corrosion. Understanding these ratings will help ensure you select the ...



Switchboards and panelboards are often called “the guts” of a premises wiring system. Article 408 covers the requirements for switchboards and panelboards that control power and lighting circuits. ...



Switchboards and panelboards are often called “the guts” of a premises wiring system. Article 408 covers the requirements for switchboards and panelboards that control power and lighting circuits ...



Explore the importance of electrical enclosures in protecting and housing electrical components. Learn about different types, materials, standards, applications, and selection guidelines ...

## Contact Us

For more information, pricing, or custom network solutions, please contact us:

Website: <https://hashherbcafe.co.za>

Email: [hello@hashherbcafe.co.za](mailto:hello@hashherbcafe.co.za)

Phone: +27 63 814 7295

Address: 15 Galaxy Road, Linbro Business Park, Johannesburg, 2065, South Africa

This document is for informational purposes only. Specifications subject to change without notice.

