

## What type of distribution box is a 36V emergency distribution box



## What type of distribution box is a 36V emergency distribution box



Experience streamlined power management with the DBSet 36 module VTPN distribution board designed for surface mounting. The enclosure material is painted sheet steel thickness of 1.2mm.



Lex Products distribution boxes range from 20-800 Amps and are known for their unprecedented durability, safety and reliability. Whether you need a power distribution box for backup power, ...



Reliable emergency lighting power distribution box for fire safety systems. DC 24V/36V compatible, ideal for centralized power supply. Model TY-D by Rmgf.



Reliable 24V/36V emergency lighting power supply and distribution box for fire control systems. Ideal for evacuation lighting and centralized power solutions. From Gcdqcn.



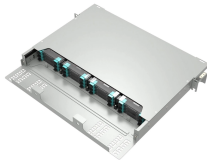
Buy 👑 Minhua Lousina Nest Central Power Distribution Box A-Type 36V Fire Emergency Lighting Controller online today! Dear Sir/Madam, thank you for visiting our store! ☐☐ All parts are sold direct ...



This guide explores control panels, electrical boxes, breaker panels, bus bars, junction boxes, and custom enclosures to help you understand their sizes, types, and common applications.



Emergency Lighting Distribution Box Classification:  
Emergency Lighting Distribution Box



According to the different power supply mode of the battery power supply of the lamp, it is divided into two ways: When the lamp adopts the centralized power supply mode, the system consists of the ...



Emergency lighting distribution box Specification and model: XZ-PD-36 Technical parameters: The host display interface, operation interface, button text, and product labels are all in English 1. Protection ...



We are a lighting enterprise that integrates research and development, manufacturing, and sales of fire emergency lighting fixtures. The company is committed to providing evacuation indication systems ...

## Contact Us

For more information, pricing, or custom network solutions, please contact us:

Website: <https://hashherbcafe.co.za>

Email: [hello@hashherbcafe.co.za](mailto:hello@hashherbcafe.co.za)

Phone: +27 63 814 7295

Address: 15 Galaxy Road, Linbro Business Park, Johannesburg, 2065, South Africa

This document is for informational purposes only. Specifications subject to change without notice.

