

What kind of adhesive is needed for optical modules



What kind of adhesive is needed for optical modules



By choosing advanced, UV-curable optical assembly adhesives, manufacturers and industry professionals can ensure their products not only meet but exceed demanding performance ...



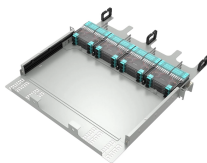
Optically clear adhesives (OCAs): These are typically pressure-sensitive or thermally cured materials used in touchscreen bonding and optical module assembly. Their high light ...



Optical adhesives are specialty adhesives for optical systems. We explain their operation principles, applications and alternatives.



Learn about Meridian's lens and structural adhesives for optical bonding, ideal for sensors, active alignment, camera modules, and LIDAR with high performance.



Reworkable optical adhesives are growing because of demand for prototyping and high-value photonic modules. Ultra-low outgassing materials are critical for automotive, aerospace, and space-grade optics.



This article presents an overview of the important characteristics involved in the selection of polymer adhesives. It provides a general guide for selecting adhesives for optical path cameras.



Various types of adhesives are used for optical gluing, with photosensitive glue being the most common due to its minimal shrinkage, high firmness, thermal stability, and ease of use.



Due to its fast curing speed, instant adhesive is often used in the initial assembly stage of optical modules, allowing engineers to complete the combination of multiple components in a short ...



Optical Adhesives are used to bond or cement optical components together or to an optical system for a number of optical applications. Optical Adhesives can be used with curing lamps to ease or quicken ...



In many optical devices, the adhesive may not even be in the optical path. A one-component, 80-degree C curable, exceptionally low viscosity epoxy for bonding, coating, and sealing ...

Contact Us

For more information, pricing, or custom network solutions, please contact us:

Website: <https://hashherbcafe.co.za>

Email: hello@hashherbcafe.co.za

Phone: +27 63 814 7295

Address: 15 Galaxy Road, Linbro Business Park, Johannesburg, 2065, South Africa

This document is for informational purposes only. Specifications subject to change without notice.

