

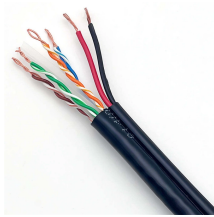
What is wavelength division multiplexing WDM in practice



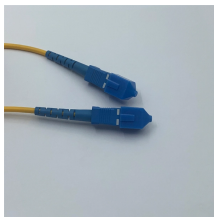
What is wavelength division multiplexing WDM in practice



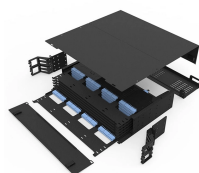
Wavelength Division Multiplexing achieves its capacity increase by exploiting a physical property of light: different wavelengths, or colors, can travel through the same medium independently.



Wavelength division multiplexing is a method of modulating multiple signals at different wavelengths (channels) to transmit them on a single waveguide or fiber.



Explore the fundamentals of Wavelength Division Multiplexing (WDM), its types, benefits, challenges, and future prospects in our detailed guide.



Wavelength division multiplexing (WDM) is a technology for increasing the transmission capacity of optical fiber communications by sending multiple data ...



Wavelength Division Multiplexing (WDM) is a technique in fiber-optic communication systems that enables multiple optical signals with different wavelengths to be combined, transmitted, and ...



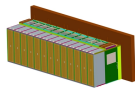
In fiber-optic communications, wavelength-division multiplexing (WDM) is a technology which multiplexes a number of optical carrier signals onto a single optical fiber by using different ...



Wavelength Division Multiplexing (WDM) is a fiber optic transmission technique that combines multiple optical signals at different wavelengths into a single fiber, significantly increasing ...



Wavelength Division Multiplexing (WDM) is defined as a multiplexing technology used in fiber-optic transmission to maximize transmitted bit rates, enabling long-haul data, video, and voice ...



WDM is an acronym used for Wavelength Division Multiplexing. It is a technique in which signals of different wavelength are multiplexed together in order to get transmitted over an optical link.



Wavelength division multiplexing (WDM) is a technology for increasing the transmission capacity of optical fiber communications by sending multiple data channels simultaneously through a single fiber, ...



Wavelength Division Multiplexing (WDM) is a fiber optic transmission technique that combines multiple optical signals at different wavelengths into a ...



Wavelength division multiplexing (WDM) is a technique of multiplexing multiple optical carrier signals through a single optical fiber channel by varying the wavelengths of laser lights. WDM allows ...

Contact Us

For more information, pricing, or custom network solutions, please contact us:

Website: <https://hashherbcafe.co.za>

Email: hello@hashherbcafe.co.za

Phone: +27 63 814 7295

Address: 15 Galaxy Road, Linbro Business Park, Johannesburg, 2065, South Africa

This document is for informational purposes only. Specifications subject to change without notice.

