

# What is the unit of measurement for a distribution box

190X95X25mm



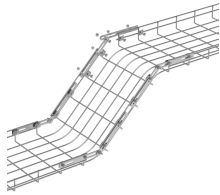
## Overview

The Unit of Measure (U/M) defines the measurement of the Unit of Issue. Example: The U/I is one package of material; each package of material contains twelve rolls (QUP), and each roll is three feet long which is the U/M. Back to Top This section explains the measurement points of the enclosures of distribution boards, switchboards, control panels, and cubicles (which require short delivery times and improved quality) as well as the problems related to these measurements. It also introduces example solutions to measurement. The UOM codes reproduced below are used in the Advanced Shipment Notice, Invoice, Item, and Purchase Order documents. It includes specifications for TOP-TS, TOP-TF, TOP-LS, TOP-PS, TOP-PF, and TOP-S distribution boxes that range from 1-way to 36-ways. They help keep everything inside safe and working properly. Picking the right size matters. For DLA DoD contracts, the DoD UI Codes will be used, not commercial UI codes.

## What is the unit of measurement for a distribution box



This section explains the measurement points of the enclosures of distribution boards, switchboards, control panels, and cubicles (which require short delivery times and improved quality) as well as the ...



A plenum is a distribution box attached to the supply outlet of the air handling unit. And the purpose of plenum box is to distribute the cooled or heated air to several spaces.



Unit of Measurement (UOM) Codes The UOM codes reproduced below are used in the Advanced Shipment Notice, Invoice, Item, and Purchase Order documents.



In addition to measuring space, you also need to consider box fill —how much volume is taken up by wires, connectors, and devices. Each item inside the box takes up a certain amount of ...



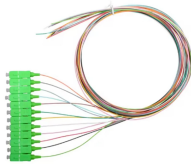
The test certificates must show the actual values obtained from the tests, in the units used in this specification, and not merely confirm that the requirements have been met.



The document provides details for designing the electrical distribution box and circuits for a residence. It includes specifications for the main circuit breaker such as size, type, and tripping capacity.



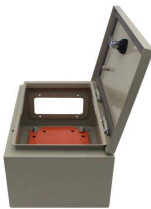
It includes specifications for TOP-TS, TOP-TF, TOP-LS, TOP-PS, TOP-PF, and TOP-S distribution boxes that range from 1-way to 36-ways. Dimensions included are length, width, and height. - ...



The Unit of Measure (U/M) defines the measurement of the Unit of Issue. Example: The U/I is one package of material; each package of material contains twelve rolls (QUP), and each roll is ...



This guide explores control panels, electrical boxes, breaker panels, bus bars, junction boxes, and custom enclosures to help you understand their sizes, types, and common applications.



Understand distribution boxes (DB boxes) in 5 minutes. Learn about types, components, functions, and uses. Find the perfect DB box for your needs.

## Contact Us

For more information, pricing, or custom network solutions, please contact us:

Website: <https://hashherbcafe.co.za>

Email: [hello@hashherbcafe.co.za](mailto:hello@hashherbcafe.co.za)

Phone: +27 63 814 7295

Address: 15 Galaxy Road, Linbro Business Park, Johannesburg, 2065, South Africa

This document is for informational purposes only. Specifications subject to change without notice.

