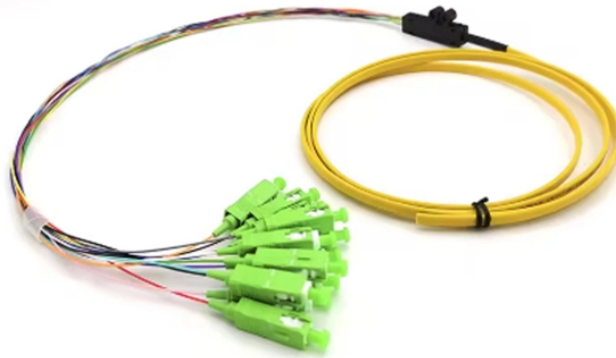


What is the largest size of a household electrical distribution box



Overview

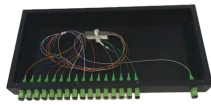
Typical wall-mount enclosure sizes often range from about 200 × 200 × 120 mm up to 800 × 600 × 300 mm. Freestanding cabinets commonly range from about 1600–2200 mm in height, 600–1800 mm in width, and 300–600 mm in depth. What size electrical box do I need for an outlet?

Most standard outlets use a single-gang box. These are among the most versatile and commonly used junction box sizes in residential and commercial wiring in the United States. That equates to enough room to hold 9 wires that are #14 gauge, 8 #12 gauge, or 7 #10 gauge. These numbers are for boxes that only house wires. Market Scope: The analysis covers residential, commercial, and light industrial electrical. for all enclosed conductors. 16(A), be less than the fill calculatio as calculated in 314.

What is the largest size of a household electrical distribution box



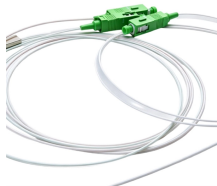
Find the right electrical DB box size for your home or project. Learn standard dimensions, NEC 2026 compliance, and key specs. Click to get expert sizing advice now.



The largest standard residential electrical panel is a 200A panel. You want to make sure you get a true 40 space panel too, not one of the "20 space, 40 circuit" panels that requires the use ...



The largest standard residential electrical panel is a 200A panel. You want to make sure you get a true 40 space panel too, not ...



If you ever have questions or uncertainty regarding the capacity of a specific box, you can consult the manufacturer. Especially when it comes to custom designs, manufacturers build enclosures with ...



These are the standard rectangular boxes you often see used for single light switches or electrical outlets in US homes. Their dimensions are ...



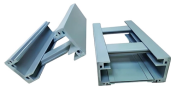
Electrical enclosure sizes are not universal, but most manufacturers follow common size families. This guide explains typical wall-mount and floor ...



The size of the box is determined by its volume, the volume of the box is found by using this formula. Height x Width x Length = The total cubic inches or the volume of the box.



Electrical enclosure sizes are not universal, but most manufacturers follow common size families. This guide explains typical wall-mount and floor-standing dimensions, how to read catalog ...



These are the standard rectangular boxes you often see used for single light switches or electrical outlets in US homes. Their dimensions are generally around 2 inches wide by 4 inches tall, ...



Learn the different electrical panel box sizes, why they matter and how to find out which size you have in your home.



The most significant measure of an electrical panel's size is its maximum current capacity, which is rated in amperes. This amperage rating determines the total volume of electricity ...



NEC® Reference stallation and use of boxes. The article includes table references that guide the electrician in the selection of the proper box size necessary to safely accommodate ele trical service ...



This guide explains standard electrical box dimensions by type, compares common sizes, and helps you select the right box for residential, commercial, and light industrial applications.

Contact Us

For more information, pricing, or custom network solutions, please contact us:

Website: <https://hashherbcafe.co.za>

Email: hello@hashherbcafe.co.za

Phone: +27 63 814 7295

Address: 15 Galaxy Road, Linbro Business Park, Johannesburg, 2065, South Africa

This document is for informational purposes only. Specifications subject to change without notice.

