

## What is the function of a scanning beam splitter



### Overview

These splitters act as an interface between the microscope and the camera, emitted light from the sample passes from the microscope to the splitter, and are split based on wavelength before being projected onto sections of the camera sensor. A beam splitter or beamsplitter is an optical device that splits a beam of light into a transmitted and a reflected beam. It is a crucial part of many optical experimental and measurement systems, such as interferometers, also finding widespread application in fibre optic telecommunications. One portion passes through the device while the other reflects off it, and the ratio between the two can be controlled by design. It enables uniform, shadow-free lighting by directing light along the same optical axis as the lens.

## What is the function of a scanning beam splitter



In spectroscopy, beam splitters help in splitting the light from a sample into different paths for analysis, allowing scientists to study the spectral characteristics of the sample in detail and ...



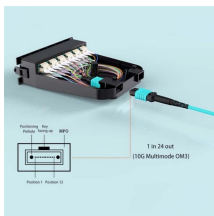
These devices, often integrated into small planar light circuit chips, function as a photon router, managing the flow of data across vast networks. They are also found in various sensing ...



While both mirror and cube beam splitters can be used for simple light beams, they can also split beams carrying an image, which makes beam splitters a powerful tool for microscopy.



A beam splitter or beamsplitter is an optical device that splits a beam of light into a transmitted and a reflected beam. It is a crucial part of many optical experimental and measurement systems, such as ...



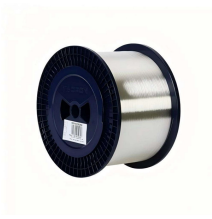
Beamsplitters are commonly employed in lasers to create different beam paths, achieving this effect by dividing the laser beam into multiple segments and then recombining them.



When integrated into specialised lenses, the beam splitter divides the incoming light into two paths: one beam illuminates the object, while the other is used for image capture.



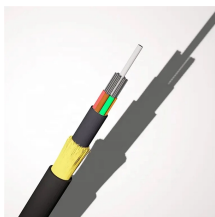
Options range from laser beam combiners designed for specific laser wavelengths to broadband hot and cold mirrors for splitting visible and infrared light. This type of beamsplitter is commonly used in ...



A beam splitter is an optical device that takes a single beam of light and divides it into two separate beams. One portion passes through the device while the other reflects off it, and the ratio between ...



A beam splitter or power splitter is an optical device that can split an incident light beam e.g. a laser beam into two or sometimes more beams, which may or may not have the same optical ...



Beam splitters are vital components in modern optical technologies as they enable precise control over light paths in various applications, including telecommunications, imaging systems, and scientific ...

## Contact Us

For more information, pricing, or custom network solutions, please contact us:

Website: <https://hashherbcafe.co.za>

Email: [hello@hashherbcafe.co.za](mailto:hello@hashherbcafe.co.za)

Phone: +27 63 814 7295

Address: 15 Galaxy Road, Linbro Business Park, Johannesburg, 2065, South Africa

This document is for informational purposes only. Specifications subject to change without notice.

