

# What is the current of each circuit in the secondary distribution box



## Overview

Below the main breaker are the two bus bars carrying the current between the main breaker and the two columns of branch circuit breakers, with each respective circuit's red and black hot wires leading off. A distribution board or distribution panel (DP) is an important part of an electricity supply system. Most of the time, each of these secondary circuits will be protected with a fuse or breaker. In this comprehensive guide, we will explore. These smaller breaker panels, also known as sub-distribution boards, are commonly used to provide power to secondary circuits within a building.

## What is the current of each circuit in the secondary distribution box



From breakers and bus bars to neutral and ground bars, we will explore each component of an electrical sub panel and explain how they work together to distribute electricity efficiently and safely.



From breakers and bus bars to neutral and ground bars, we will explore each component of an electrical sub panel and explain how they work together to ...



A distribution board or breaker panel separates incoming mains power into various sub-circuits. Usually, all the fuses, breakers and other circuit protection devices for these secondary ...



Distribution boards, often referred to as electrical panels or breaker boxes, serve as the nerve center of any electrical system. Here we explore the crucial parts of a distribution board and gain insights into ...



You determine the required number of branch circuits by dividing the total calculated load in amperes by the ampere rating of the circuit [210.11 (A)]. If the load is calculated on VA per sq ft, the wiring system ...



A dedicated circuit of 120 volts is usually provided for each dishwasher, disposal, gas or oil furnace, and clothes washer. Most other 120-volt circuits tend to serve a number (from 2 to 20) of lights and plug ...



There are several ways to build a branch circuit for a motor load. Each method provides short-circuit protection, motor overload protection, and the ability to start and stop the motor.



Switchboards and panelboards must have a short-circuit current rating not less than the available fault current on the line side of the equipment. In other than one- and two-dwelling units, the available fault ...



Below the main breaker are the two bus bars carrying the current between the main breaker and the two columns of branch circuit breakers, with each respective circuit's red and black hot wires leading off.



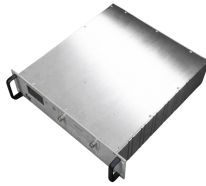
A low-voltage network or secondary network is a part of electric power distribution which carries electric energy from distribution transformers to ...



A low-voltage network or secondary network is a part of electric power distribution which carries electric energy from distribution transformers to electricity meters of end customers.



This document outlines the design and functionality of electrical distribution panels, detailing their types, key features, and operational mechanisms. It emphasizes ...



OverviewUnited KingdomNorth AmericaManufacturer differencesLocation and designationTheatre lighting

## Contact Us

For more information, pricing, or custom network solutions, please contact us:

Website: <https://hashherbcafe.co.za>

Email: [hello@hashherbcafe.co.za](mailto:hello@hashherbcafe.co.za)

Phone: +27 63 814 7295

Address: 15 Galaxy Road, Linbro Business Park, Johannesburg, 2065, South Africa

This document is for informational purposes only. Specifications subject to change without notice.

