

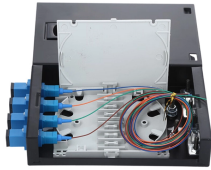
What is optical cable G652ULL



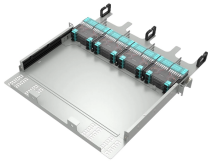
Overview

G652 is a type of optical fiber designed for carrying a single mode of light, which means it is ideal for long-distance, high-capacity communication networks. Whether it is a long-distance network, local network, or access network, it is the absolute protagonist, accounting for more than 95% of its overall. There are 19 different single mode optical fiber specifications defined by the ITU-T, among which G. 652 fiber is the most commonly used. Each fiber type is engineered with different refractive index profiles, dispersion properties, and bending performance to support specific applications—from long-distance. Choosing between G. A2 fibers depends largely on your specific needs, particularly concerning the installation environment and space constraints. The types of fiber optic cables can seem complex, so it's crucial to choose the right type for your needs. I was in a mess when checking goods.

What is optical cable G652ULL



The G657 Fiber Optic Cable which is thinner than ordinary telephone cable is used for FTTH solution. Without G657 optical fiber, there is no large-scale application of FTTH.



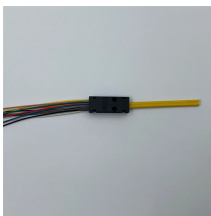
G.652 fiber is the earliest type of single-mode optical fiber used and is currently the most widely used optical fiber in communication networks. Whether it is a long-distance network, local ...



This specification covers Optical Ground Wire Cables (OPGW) for the installation on high voltage overhead power lines. The cable contains optical fibers for data transmission and telecom purposes ...



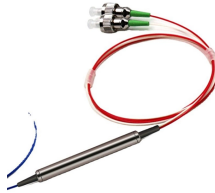
G654:Ultra low loss optical fiber, mainly used for transoceanic optical cable. The common core is pure SiO₂,while the ordinary ones need to be doped with germanium.



G.652, G.655, and G.657 are ITU-T standardized singlemode fiber types used across long-haul, metro, ODN, and FTTH networks. Each fiber type is engineered with different refractive ...



G.651 is Multi-mode fiber, and G.652 to G.657 all are single-mode fibers. The optical fiber is composed of core, cladding and coating, as shown in Figure 1.



This Recommendation describes a single-mode optical fibre and cable which has zero-dispersion wavelength around 1310 nm and which is optimized for use in the 1310 nm wavelength region, and ...



ITU-T G.652 optical fiber is the most widely used single mode fiber among all the 19 SMF types, which is also called standard SMF. G.652 vs G.657.



The types of fiber optic cables can seem complex, so it's crucial to choose the right type for your needs. Let's explore the key distinctions between G.652.D, G.657.A1, and G.657.A2 fibers to ...

Contact Us

For more information, pricing, or custom network solutions, please contact us:

Website: <https://hashherbcafe.co.za>

Email: hello@hashherbcafe.co.za

Phone: +27 63 814 7295

Address: 15 Galaxy Road, Linbro Business Park, Johannesburg, 2065, South Africa

This document is for informational purposes only. Specifications subject to change without notice.

