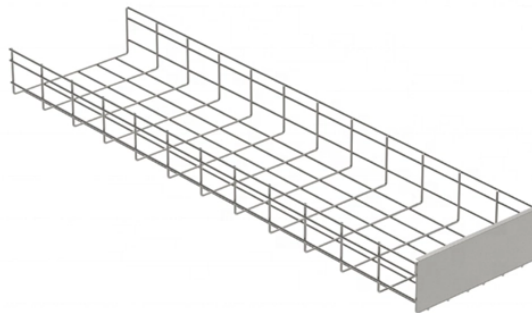


What indicator light should be on the router s fiber optic cable



Overview

The "PON light" on a router typically refers to the indicator light that shows the status of the PON connection. Understanding LED Indicators on a Fiber Router Let's break down what the common LED lights on a fiber router mean and how they behave: 1. POWER Normal: Solid/stagnant light. Blinking green typically means data. The LEDs on your modem, optical network terminal (ONT), router, or modem/router combo (gateway) are most likely blinking because they're communicating what the device is doing, or there's an error. Solid Green: The ONT is powered on and functioning normally. What to check: Make sure the power cable is securely plugged into both the ONT and a working wall outlet. These lights act as a quick diagnostic language shared by routers, modems, and gateways, helping both users and technicians instantly.

What indicator light should be on the router s fiber optic cable



Not sure what the lights on your fiber equipment mean? This guide explains each status light and how to troubleshoot common issues.



Labor Day 2026 occurs on Monday, September 7. Labor Day pays tribute to the contributions and achievements of American workers and is traditionally observed on the first ...



The internet light, also sometimes labeled WAN or PON (fiber only) or with a globe icon, signifies a connection to the internet. The internet light usually appears right after the upstream data ...



Earth Day, an event to increase public awareness of the world's environmental problems, is celebrated in the United States for the first time on April 22, 1970. Millions of Americans, including ...



Router LED indicators provide immediate visual feedback about connection status and device activity. Solid lights usually mean stable connectivity, while blinking signals active data ...



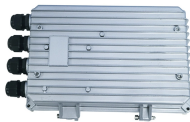
Arbor Day—which literally translates to “tree” day from the Latin origin of the word “arbor”—is a holiday that celebrates the planting, upkeep and preservation of trees.



History happens every day! Check in with your virtual assistant or wherever you get your podcasts to find out about the historical events that happened on this day and every other day of the year.



Understanding LED Indicators on a Fiber Router
Let's break down what the common LED lights on a fiber router mean and how they behave: 1. POWER Normal: Solid/stagnant light.



Mother's Day is a holiday honoring motherhood that is observed in different forms throughout the world. While dates and celebrations vary, Mother's Day traditionally involves ...



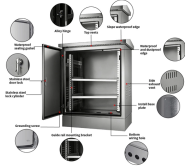
The PON or optical light is your most important ONT indicator — it tells you whether the fiber cable itself is delivering a signal from your provider's network.



Green or white lights typically indicate normal operation. When your equipment is working properly, you'll usually see solid or gently blinking green or white lights across most indicators. ...



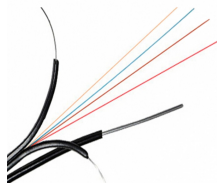
Also on This Day in History Discover more of the major events, famous births, notable deaths and everything else history-making that happened on May 10th 1534



May Day is a May 1 celebration with a long and varied history, dating back millennia. Throughout the years, there have been many different events and festivities worldwide, most with the express ...



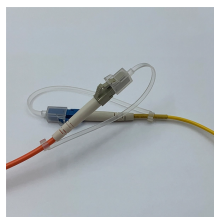
Earth Day, celebrated every April, was founded in 1970 as a day of education about environmental issues.



The exact origin of Valentine's Day is unknown, but the holiday's name and date come from the martyrdom of St. Valentine, a third-century priest.



The PON light is an essential indicator for users who have fiber optic internet connections. If the PON light is not on or is blinking, it could indicate a problem with the connection.



If the internet light on your ONT is flashing, it could mean that the device is trying to establish a connection to the fiber-optic network. This is usually a normal part of the startup process, ...



Broadband light (solid green): DSL or fiber connection is established. Broadband light (blinking green): The gateway is training or syncing with the DSL/fiber signal.



Router status lights, often referred to as LED indicators, are small lights on the front panel of your router. These lights help users understand the operational state of the device and its various components.



Cinco de Mayo celebrations have taken place for more than a century, but the holiday we know today is much different than its origins. The day began as a victory party commemorating ...

Contact Us

For more information, pricing, or custom network solutions, please contact us:

Website: <https://hashherbcafe.co.za>

Email: hello@hashherbcafe.co.za

Phone: +27 63 814 7295

Address: 15 Galaxy Road, Linbro Business Park, Johannesburg, 2065, South Africa

This document is for informational purposes only. Specifications subject to change without notice.

