

# What color wires are used in cable trays



## Overview

Depending on which end of the cable you're looking at, you can read the colors clockwise or counterclockwise from the center black conductor. Let's say you cut your cable and see this series of colors: black, white, red, green, orange, and blue, in that order and in. Tray cable comes in many different styles, featuring a variety of layouts, insulations, jackets, shields, and even colors. Unlike standard electrical cables, tray cables feature enhanced insulation and jacketing to withstand mechanical stress and exposure to oil, sunlight. In many cases there is more than one type of cable for a particular application, for instance both cables rated as tray cable (TC) and cables rated as metal clad (MC) can be used for 600- volt motor power cables. But wire colors are screwed up from the start. Nearly all runs require a ground, so one should be green or bare. So, any 120 volt run. The outer jacket of a tray cable does more than hold everything together — it's the cable's first line of defense against the world. It protects against abrasion, chemicals, UV light, and temperature extremes. It determines whether a cable can be buried, run outdoors, exposed to washdowns, or.

## What color wires are used in cable trays



Specifies requirements for metal cable trays and associated fittings designed for use in accordance with the rules of Canadian Electrical Code, Part I and the National Electrical Code®



Depending on which end of the cable you're looking at, you can read the colors clockwise or counterclockwise from the center black conductor. Let's say you cut your cable and see this series ...



But wire colors are screwed up from the start. Most 3 wire cable is black, red, blue. Nearly all runs require a ground, so one should be green or bare. A few with more wires do have a ...



TC (tray cable, per NEC Article 336, UL 1277) is a versatile cable suitable for use in cable trays, raceways and even direct burial (if specifically rated). TC can be used for power, lighting and control ...



Learn the essential tray cable color codes to choose the right wire for your application, ensuring safety and compliance in all your electrical projects. Maximize efficiency with proper wiring choices.



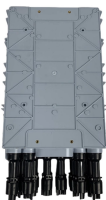
In a paired-tray cable, conductors are twisted into dedicated pairs—usually with color-coded insulation—and sometimes individually shielded. These pairs are then bundled together under ...



Standard Type TC cable is approved for installation in cable trays, raceways, and outdoor locations where supported by messenger wire. It is not approved for direct attachment to building surfaces ...



Pair cables are Black, White and numbered. Triad cables are Black, White, Red and numbered



To that end this Bulletin is intended to discuss the types of cables most frequently used in cable trays and the wiring methods permitted in cable trays under the National Electric Code (NEC) NFPA 70.



SHIELDED TRAY CABLE PVC Jacket PVC/Nylon Insulation 90°C - 600 Volt - UL Type TC-ER\* 16 AWG E-2 Color Code 09-20-2017

## Contact Us

For more information, pricing, or custom network solutions, please contact us:

Website: <https://hashherbcafe.co.za>

Email: [hello@hashherbcafe.co.za](mailto:hello@hashherbcafe.co.za)

Phone: +27 63 814 7295

Address: 15 Galaxy Road, Linbro Business Park, Johannesburg, 2065, South Africa

This document is for informational purposes only. Specifications subject to change without notice.

