

West Asia Optical Cable Construction and Processing Enterprises



West Asia Optical Cable Construction and Processing Enterprises



The Asia Pacific region has emerged as one of the most dynamic markets for optical interconnect cable assemblies, driven by rapid technological advancements, increasing internet...



We have created an inclusive, low-cost, and sustainable digital transformation path, providing industrial personalized services with common foundations for the production, distribution, circulation, and ...



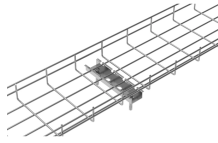
The Company (Asia Pacific Wire & Cable Corporation Limited), formed on September 19, 1996, is a Bermuda exempted limited liability company which, through its operating subsidiaries, is ...



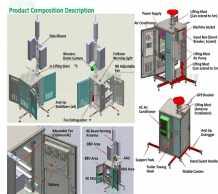
NTT Ltd. today announced it will commence the construction of a ...



Singapore, 8 November 2022 - Singtel, together with five regional carriers, today announced the signing of a US\$300 million (SG\$420.8 million) contract to build a 6,000km submarine cable system known ...



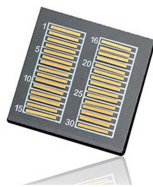
Chinese enterprises as key players in the equipment manufacturing, construction and maintenance of global submarine cables. Chinese submarine cable products and services have gained widespread ...



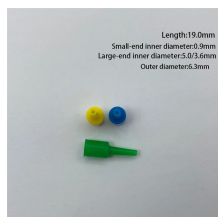
This brief explores Asia's evolving subsea cable network, explains why trusted cable networks are a key ingredient for U.S. competitiveness in the global economy, and offers ...



Hengtong Group is an international enterprise with a diverse range of expertise covering optical fibre, power, marine and offshore cable, EPC turnkey service and maintenance, as well as IoT, big data ...



Crossing the Pacific Ocean, the E2A cable system will link major digital hubs in Asia and North America, with landings in Toucheng (Taiwan), Busan (South Korea), Maruyama (Chiba, ...



Length:19.0mm
Small-end inner diameter:0.9mm
Large-end inner diameter:5.0/3.6mm
Outer diameter:3mm

NTT Ltd. today announced it will commence the construction of a "MIST" large-capacity submarine cable between Singapore, Myanmar and India.



Pre-Terminated Patch Panel
Multi-application support Flexible configuration Modular design

Crossing the Pacific Ocean, the E2A cable system will link major digital hubs in Asia and North America, with landings in Toucheng (Taiwan), ...

Contact Us

For more information, pricing, or custom network solutions, please contact us:

Website: <https://hashherbcafe.co.za>

Email: hello@hashherbcafe.co.za

Phone: +27 63 814 7295

Address: 15 Galaxy Road, Linbro Business Park, Johannesburg, 2065, South Africa

This document is for informational purposes only. Specifications subject to change without notice.

