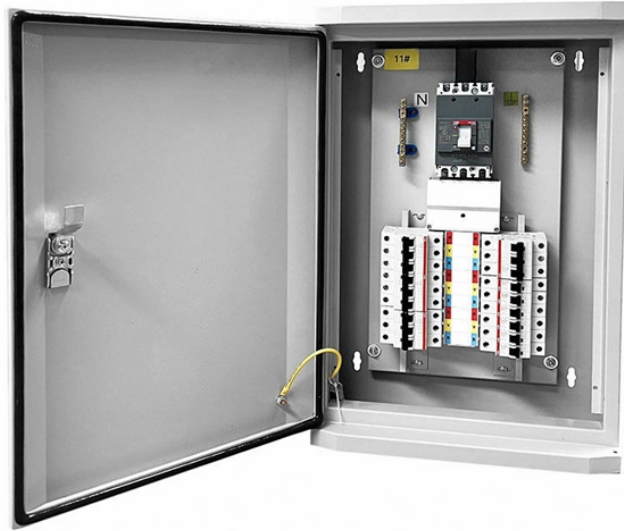
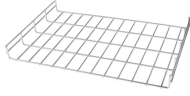


## Waterproof Data Center Cable Trays for Ethiopian IDC Server Rooms



## Waterproof Data Center Cable Trays for Ethiopian IDC Server Rooms



Engineered wire mesh cable trays and sheet metal solutions for mission-critical data centers. Improve airflow, scalability, and reliability with Marlin Steel.



Strong, versatile, and easy to install, Besca Top Quality Wire Basket Wire Mesh Cable Trays is complimented with all the accessories you need. With no need for separate bends, risers, tees and ...



At APES Engineering, we provide professional Cable Runway and Cable Tray solutions designed for modern data centers, server rooms, and IT infrastructure environments.



In this guide, we will walk through how to select, design, and install cable trays specifically for server room environments, helping you avoid common mistakes and build a system ...



AZE offers a variety of styles, materials and finishes available to support virtually any commercial and industrial cable support application requirement. A cable runway or ladder rack system provides ...



Eaton offers a variety of products to organize and secure copper, fiber and power cables in server rooms and IT closets. Eaton's data center cable management solutions are sturdy and easy-to-assemble, ...



Snap Track® ventilated channel cable tray serves targeted applications within data center environments — auxiliary and support system cabling, retrofit and expansion projects, and facilities where industrial ...



Snake Tray manufactures cable trays, power distribution solutions and cost-effective cable management systems for data centers, solar installations, transit & more.



As data centers expand or reconfigure, Madsen Steel Wire Products cable trays make it easy to add, remove, or reroute cabling without major downtime or costly retrofits.



BASOR product series for data centers are specially designed for the installation of fiber optic cables. The priority of this extremely flexible system is that the cable laying is carried out with the utmost ...

## Contact Us

For more information, pricing, or custom network solutions, please contact us:

Website: <https://hashherbcafe.co.za>

Email: [hello@hashherbcafe.co.za](mailto:hello@hashherbcafe.co.za)

Phone: +27 63 814 7295

Address: 15 Galaxy Road, Linbro Business Park, Johannesburg, 2065, South Africa

This document is for informational purposes only. Specifications subject to change without notice.

