

## Wall-mounted trapezoidal cable tray fixing method



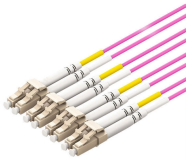
### Overview

WBT offers numerous splice options for traditional tray/tray splicing. Most common is the Splice Kit and Double splice. Article Summary: A compliant cable tray installation requires a thorough understanding of NEC Article 392, proper structural support, and precise installation techniques. This guide covers the critical steps, from selecting the right electrical cable tray and performing accurate cable fill. This article gives a brief idea of cable tray supports, methods of fixing the supports, and their role in cable management systems. The tray is locked into place - no additional ha installations. For trapeze configurations, specify TabLok profile 4 in.

## Wall-mounted trapezoidal cable tray fixing method



This guide covers the critical steps, from selecting the right electrical cable tray and performing accurate cable fill calculations to managing a safe cable pull through and ensuring all bonding and grounding ...



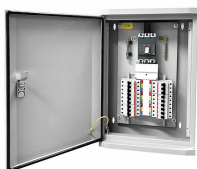
Discover efficient cable tray support structures for optimal cable management. Learn about hanger, wall-mounted, and Unistrut systems for safer installations.



Learn the fastest way to hang & fix a 300mm cable tray T-joint! Perfect for electricians & engineers. ↩ ...more



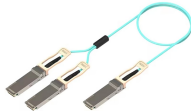
NEMA VE 1-2017 Specifies requirements for metal cable trays and associated fittings designed for use in accordance with the rules of Canadian Electrical Code, Part I and the National Electrical Code®



The best installation method depends on your space and needs, but wall-mounted brackets or ceiling suspensions are both solid options. Ceiling suspension is ideal for larger areas, ...



Buy 150mm cable tray trapeze bracket with 300mm drop. Fully assembled pre-galvanised kit includes all strut, bolts, and fixings for fast install.



WBT offers numerous splice options for traditional tray/tray splicing. and requires no additional bonding or jumpers for UL compliance. Most common is the Splice Kit and Double splice. These are 3 piece ...



General Installation Guidelines: latest NEMA standards and local building codes. Trough tray field support and frequency depends on the weight and construction (splice locations, elbow fittings, etc.) ...



Ladder tray should be mounted far enough off the floor or roof to allow the cables to exit through the bottom of the tray. If strut is used as a cross support, mount the strut directly to the roof or floor.



The tray is then attached to the bracket using either a bracket clamp (see page C35) in the case of the "L" bracket or integrated bend-down tabs for the TabLok bracket.



It includes diagrams showing how to mount cable trays on walls using pre-fabricated flanges or channels. The document outlines steps for laying cables, including installing supports, fixing the tray, ...



Try Walraven RapidRail® fixing rail for a trapeze hanger that's quicker and easier to install and offers time and cost savings over traditional strut application.

## Contact Us

For more information, pricing, or custom network solutions, please contact us:

Website: <https://hashherbcafe.co.za>

Email: [hello@hashherbcafe.co.za](mailto:hello@hashherbcafe.co.za)

Phone: +27 63 814 7295

Address: 15 Galaxy Road, Linbro Business Park, Johannesburg, 2065, South Africa

This document is for informational purposes only. Specifications subject to change without notice.

