

## WDA stands for Wavelength Division Multiplexing



### Overview

Wavelength division multiplexing is a kind of frequency division multiplexing — a technique where optical signals with different wavelengths are combined, transmitted together, and separated again. This guide delves into the principles, types, applications, and future trends of WDM. Tailored for professionals sourcing solutions from CommMesh, it. Wavelength Division Multiplexing (WDM) is a technology that allows network operators to multiply the data-carrying capacity of existing fiber optic lines. Do - Optical Interfaces for single channel STM-64, STM- 256 systems and other SDH systems with optical amplifiers.

## WDA stands for Wavelength Division Multiplexing



Learn how dense wavelength-division multiplexing (DWDM) dramatically scales bandwidth by combining up to 80 channels over a single pair of optical fiber.



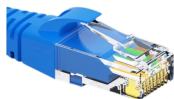
Wavelength Division Multiplexing (WDM) revolutionizes fiber optics by multiplexing multiple wavelengths (e.g., 1310–1550 nm) over a single fiber, ...



WDM stands for Wavelength Division Multiplexing. It's an optical multiplexing technique that utilizes different frequencies at varying wavelengths to transmit data independently over multiple channels.



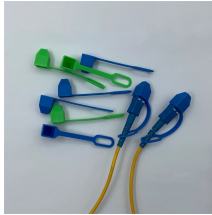
Wavelength division multiplexing is a technology where multiple optical signals with different wavelengths are combined for transmission through a single optical fiber and are later separated.



In fiber-optic communications, wavelength-division multiplexing (WDM) is a technology which multiplexes a number of optical carrier signals onto a single optical fiber by using different ...



Wavelength Division Multiplexing is a multiplexing and multiple-access technology, used in fiber-optic transmission in order to maximize transmitted bit rates. Its earliest beginnings, in the form of ...



Wavelength Division Multiplexing achieves its capacity increase by exploiting a physical property of light: different wavelengths, or colors, can travel through the same medium independently.



Wavelength Division Multiplexing (WDM) revolutionizes fiber optics by multiplexing multiple wavelengths (e.g., 1310–1550 nm) over a single fiber, achieving Tbps capacities with low ...



Wavelength Division Multiplexing (WDM) is a technique in fiber-optic communication systems that enables multiple optical signals with different wavelengths to be combined, transmitted, and ...



This document provides the generic requirements and specifications for a test instrument which can take comprehensive measurement at Wavelength Division Multiplexing (WDM) network and Optical Line ...

## Contact Us

For more information, pricing, or custom network solutions, please contact us:

Website: <https://hashherbcafe.co.za>

Email: [hello@hashherbcafe.co.za](mailto:hello@hashherbcafe.co.za)

Phone: +27 63 814 7295

Address: 15 Galaxy Road, Linbro Business Park, Johannesburg, 2065, South Africa

This document is for informational purposes only. Specifications subject to change without notice.

