

WAN port of fiber optic wireless router



Overview

Compatible router: Verify that your router supports fiber optic input (look for an SFP or WAN port labeled "ONT" or "Fiber"). Fiber optic cable: Typically a thin, yellow cable with specialized connectors (SC/APC or SC/UPC). Here's a simple guide to help you through the process: 1. Check Your Fiber Optic Equipment Before you start, make sure you have the necessary equipment: Fiber Optic Modem (ONT - Optical Network Terminal):. Fiber optic internet delivers blazing-fast speeds and reliable connectivity, making it a top choice for modern homes and businesses. Need help?

Shop routers with dual WAN capabilities for seamless failover and enhanced network stability. Browse business and home solutions. A Wide Area Network (WAN) is a network that connects more than two Local Area Networks (LANs). A WAN could be any connection. The WAN Port, is one of the most important ports on your router, but where is it for?

And how do you recognize it?

The WAN port looks exactly the same as the LAN ports on your router, but there is a big difference between the two.

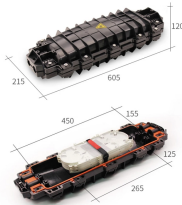
WAN port of fiber optic wireless router



The SFP+ port is a high-speed optical-to-optical signal conversion port, mainly used for 10G Ethernet and Fiber Channel network applications. A key advantage of SFP+ Modules is that ...



Summary of Connections: Fiber Optic Cable → ONT
ONT Ethernet Port → Router WAN Port Router →
Power On Once everything is properly connected
and configured, your router will ...



Connect an Ethernet cable from the modem's LAN
port to the WAN port on your wireless router. This
setup allows your wireless router to receive the
converted electrical signal and distribute ...



The WAN port looks exactly the same as the LAN
ports on your router, but there is a big difference
between the two. In this article, I will explain
everything you need to know about the WAN ...



Shop routers with dual WAN capabilities for
seamless failover and enhanced network stability.
Browse business and home solutions.



The new router is required if the current wireless device cannot support the Gigabit rates or is not fitted with the dedicated WAN port, or if it is not prepared for the new wireless standards.



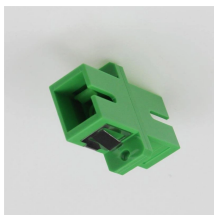
Compatible router: Verify that your router supports fiber optic input (look for an SFP or WAN port labeled "ONT" or "Fiber").



In short: the LAN port connects to the internal network, and the WAN port connects to the external internet. If an access point has a WAN port, it usually indicates router-like capabilities.



Wondering what the WAN port on your router is? Here are its common uses and the importance of choosing the right port.



The single most overlooked spec when buying a router for fiber is the WAN port speed. If your fiber plan delivers 2 Gbps and your router has only a 1 Gbps WAN port, you are physically capped at half your ...



In short: the LAN port connects to the internal network, and the WAN port connects to the external internet. If an access point has a WAN port, it ...

Contact Us

For more information, pricing, or custom network solutions, please contact us:

Website: <https://hashherbcafe.co.za>

Email: hello@hashherbcafe.co.za

Phone: +27 63 814 7295

Address: 15 Galaxy Road, Linbro Business Park, Johannesburg, 2065, South Africa

This document is for informational purposes only. Specifications subject to change without notice.

