

## Voltage switch small busbars connected in series



### Overview

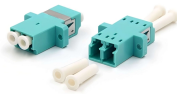
They are also used to connect high voltage equipment at electrical switchyards, and low-voltage equipment in battery banks. They are generally uninsulated, and have sufficient stiffness to be supported in air by insulated pillars. Overview In , a busbar (also bus bar) is a metallic strip or bar, typically housed inside,, and for local high current power distribution, transmission, or switching s. The busbar's material composition and cross-sectional size determine the maximum current it can safely carry. Busbars can have a cross-sectional area of as little as 10 square millimetres (0.016 sq in), but.



## Voltage switch small busbars connected in series



Design a flexible and efficient power distribution system with Schneider Electric UK's innovative busbar systems. Explore Canalis busbars for a modular approach to electrical distribution.



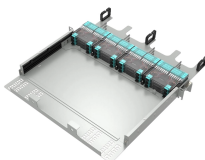
Learn how switchboard busbars are designed, sized, and verified to IEC/UL. Compare Cu vs Al, spacing, and testing. Download the RFQ checklist.



Voltage-independent selective main miniature circuit breakers (SHU) in the precounter area support downstream miniature circuit breakers by providing better current limitation.



ABB busbar systems enable safe and easy cross-wiring of miniature circuit breakers, residual current devices and other Modular DIN-Rail products.



If you connect solar panels in series the voltage increases and when you connect them in parallel the current increases. The same is the case when constructing a battery bank with individual batteries.



Whether you have 2 or more batteries in series or parallel, you only need two busbars, one each for all the positive and negative connections. ...



Our busbars can be combined with fasteners of all shapes and sizes but when combined with our HPLB (High-Power Lock Box) terminal we can eliminate all loose fasteners and provide a self-aligning, ...



The circuit's connection point sits electrically between the two breakers, so that either breaker can connect it to its respective bus. Depending on the operating philosophy, one or both ...



MNS R main busbars are available for currents up to 6300 A. Main busbars, as well as distribution busbars, can be completely segregated. Each MNS R panel can be fitted with three busbar systems ...



The design of busbars in Medium Voltage (MV) switchgear must strictly adhere to a series of industry standards. ...



These standards specify the parameters that should be considered when sizing busbars, including current rating, short-circuit withstand capacity, temperature rise, insulation, and ...



The design of busbars in Medium Voltage (MV) switchgear must strictly adhere to a series of industry standards. These regulations serve as the foundational bedrock for ensuring the ...



E-Line KX Series Compact Busbar Systems are used in horizontal and vertical energy distribution and transmission in Bolt-on (supply from the junctures) and Plug-in (from window points on the busbar ...

## Contact Us

For more information, pricing, or custom network solutions, please contact us:

Website: <https://hashherbcafe.co.za>

Email: [hello@hashherbcafe.co.za](mailto:hello@hashherbcafe.co.za)

Phone: +27 63 814 7295

Address: 15 Galaxy Road, Linbro Business Park, Johannesburg, 2065, South Africa

This document is for informational purposes only. Specifications subject to change without notice.

