

Vertical elbow inside cable tray



Vertical elbow inside cable tray



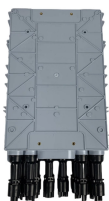
Atkore Channel supports single branches of power or multiconductor control cable or instrument tubing. Ideal for communication, fire alarm, or call station and clock cabling. All elbows are supplied with one ...



Discover our 90° Vertical Elbow for cable tray systems. Contact us today for availabilities and receive a quote. Fast shipping guaranteed.



These elbows turn horizontally on a 90° angle to route cable ladder systems that run around corners or machinery.



Aluminum channel elbow fitting for secure cable tray installations. Arc-welded and available in various sizes.



TechLine Mfg. manufactures long radius elbow fittings to enhance ease of use for Snap Track cable tray systems. These are available in vertical inside, vertical outside and horizontal configurations.



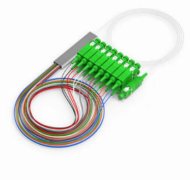
LADDER CABLE TRAY SYSTEM 90° Vertical Elbow
 Outside & Inside OUTSIDE (90) INSIDE (9I) CSA
 Certified for CSA Systems 90°



GRP-vertical inside elbow, for cable tray KK, with
 unperforated side rails, with moulded connector,
 glass fiber reinforced polyester, pressed, RAL
 7032, pebble grey



Choose from an extensive selection of metallic
 ladder tray with a variety of rung and bottom
 styles to choose from. Finishes include steel, 304L
 and 316L stainless steel to meet the needs of any
 ...



Vertical inside elbows guide cables upward in tray
 systems, with 4"-7" rail heights, 6"-36" widths,
 and 12"-36" radii for varied installation needs.



Ensure your cable tray solution is designed for
 your application, with our vast range of ladder tray
 fittings. Choose from the following: Horizontal
 elbows, Vertical elbows, Tees, Reducers, Cross ...

Contact Us

For more information, pricing, or custom network solutions, please contact us:

Website: <https://hashherbcafe.co.za>

Email: hello@hashherbcafe.co.za

Phone: +27 63 814 7295

Address: 15 Galaxy Road, Linbro Business Park, Johannesburg, 2065, South Africa

This document is for informational purposes only. Specifications subject to change without notice.

