

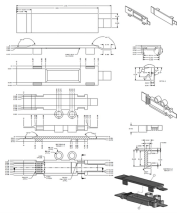
## Vertical cable tray elbow diameter reduction



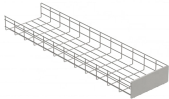
## Vertical cable tray elbow diameter reduction



The 30° Vertical Elbow is an ideal choice for installations where large diameter cables are involved in long span situations. It effectively reduces the overall tray width and provides a seamless transition ...



The aluminum I-beam design of ITray is perfect for industrial installations with large diameter cables in long span situations, minimizing total tray width and creating a smooth transition between straight ...



Cable tray length is selected based on the load to be supported, the distance between the supports (also referred to as the span), and handling and installation constraints.



Some applications may require the cable tray to support the weight of a single, dead object in addition to the cable loads. Specifications typically require this to be applied at the midpoint of the span between ...



The construction and outside diameter of the smallest cable will usually determine either the rung spacing or the type of construction for the bottom of the tray.



When fitting cable trays and their accessories, the products are cut on site to create changes of direction, adjust sections, etc. Damage can also occur during handling; as a result, both the ...



Reducers - These join cable trays of different widths in the same plane. Covers act as an additional safeguard, providing shelter from sunlight dirt accumulation and accidental contact. They ...



Mill-galvanized steel elbow fitting for cable support, NEMA VE-1 tested.



Vertical Outside Elbow 90° design made by Nam Phuong Viet with high-quality, conforms to the requirements of technical standards, and application for all ...



Our wind certification report provides you with list of acceptable B-Line series cable tray supports, fittings and covers based off of the environmental conditions, cable loading, and type of cable tray in your ...



Cable trays shall be installed as a complete system using fittings or other means to provide adequate cable support and bending radius before the conductors are installed.



To install the cable tray supports, first find the required elevation from the floor to the bottom of the cable tray and establish a level line with a laser or a nylon string.

## Contact Us

For more information, pricing, or custom network solutions, please contact us:

Website: <https://hashherbcafe.co.za>

Email: [hello@hashherbcafe.co.za](mailto:hello@hashherbcafe.co.za)

Phone: +27 63 814 7295

Address: 15 Galaxy Road, Linbro Business Park, Johannesburg, 2065, South Africa

This document is for informational purposes only. Specifications subject to change without notice.

