

Vertical Shaft Cable Tray Support Installation Scheme



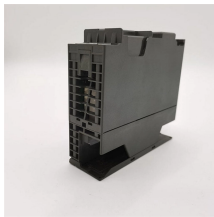
Overview

The Trapeze or swing support is the most common type. Thread hex nut 25 mm (1") to 50 mm (2") above location of the tray bottom. The cross member comes next followed by a second set of square washers. All vertical hangers will project through the cross. An electrical cable tray system serves as a rigid structural raceway designed to support and route electrical cables and wires. Unlike a simple wire trough, which is typically a covered channel for shorter runs, cable trays provide a comprehensive support system for complex wiring paths over long. association representing the major electrical equipment manufacturers in the U. Cable ladder systems and cable tray systems shall be manufactured in accordance with BS EN 61537, channel support. Our knowledgeable production team works closely with each customer to provide quality solutions based on your schedule and budget.

Vertical Shaft Cable Tray Support Installation Scheme



Cable tray length is selected based on the load to be supported, the distance between the supports (also referred to as the span), and handling and installation constraints.



This guide covers the critical steps, from selecting the right electrical cable tray and performing accurate cable fill calculations to managing a safe cable pull through and ensuring all bonding and grounding ...



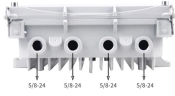
NEMA VE 2-2018 Cable Tray Installation Guidelines. Learn best practices for cable tray installation, support, and accessories.



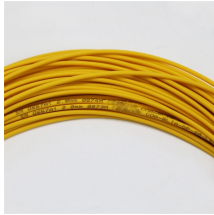
Our wind certification report provides you with list of acceptable B-Line series cable tray supports, fittings and covers based off of the environmental conditions, cable loading, and type of cable tray in your ...



The design and cost of the cable tray is greatly affected by this designation. In order to determine the most appropriate and economical system, a class should be selected that reflects the actual total ...



This method statement covers the site installation of the cable tray & ladders and the requirements of checks to be carried out.



The following recommendations are intended to be a practical guide to ensure the safe and proper installation of cable ladder and cable tray systems and channel support and other support systems.



VERTICAL CABLE TRAY ELBOWS AT THE TOP OF RUNS SHOULD BE SUPPORTED AT THE JOINT ON EACH END. VERTICAL CABLE TRAY ...



This document provides details on installing cable trays and their support systems. It includes diagrams showing how to mount cable trays on walls using pre-fabricated flanges or channels.



The load capacity of the cable trays according to the support width can be read off in the diagram using load curves - here, shown as an example for a cable tray with the tray widths 100 to 600 mm.



Center hung tray supports allow for quicker and easier cable installation by allowing cables to be deposited into tray systems from each side. There is a maximum load capacity per hanger of 318 kg ...

Contact Us

For more information, pricing, or custom network solutions, please contact us:

Website: <https://hashherbcafe.co.za>

Email: hello@hashherbcafe.co.za

Phone: +27 63 814 7295

Address: 15 Galaxy Road, Linbro Business Park, Johannesburg, 2065, South Africa

This document is for informational purposes only. Specifications subject to change without notice.

