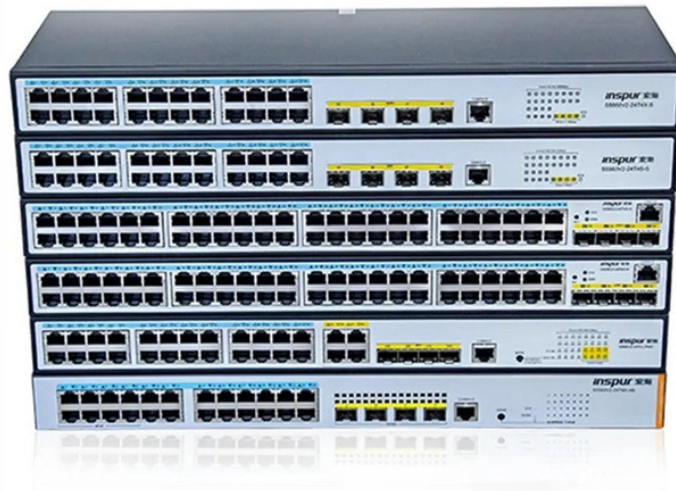


Vertical Distribution of 10kV Busbars



Vertical Distribution of 10kV Busbars



Our IEC 61439 busbars are high in demand due to their optimum performance in power distribution and electrical systems. Our engineers have years of experience in optimizing the ...



For this reason, busbar trunking systems rather than the cable installation method are being used more and more often by engineering offices for the transmission and distribution of power.



The document then discusses isolators, low voltage panels, busbar trunking systems and different methods for vertical power distribution in large buildings such as ...



The distribution busbar lengths have tabs pressed into the conductor to allow tap of units to be connected. This patented method for creating the tabs does not require any welding process, ...



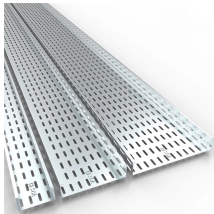
Get answers for advantages and common uses for electric busbars, types of busbars, and how simulation tools complement the design process.



Busbar power distribution removes both the bulky PDUs and the line-side wiring and cable management necessary to electrify enclosures. What's more, busbar power panels can more easily accommodate ...



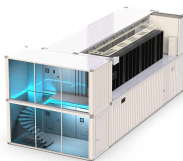
Download scientific diagram | represents a switchboard where the vertical distribution busbar, constituted by a bare bar of solid manufacture and provided with spacers, is derived from the...



Downloading this free, high-quality drawing allows you to streamline your design process, verify spatial constraints, and ensure your power distribution layout is compliant, safe, and efficient.



Our busbar systems for electrical installations offer a particularly easy way of fitting distribution systems with electrotechnical components. The modular design saves space, while quick assembly contacts ...



Distribution of current throughout a conductor at high frequencies is concentrated near the surfaces (called the "skin effect"). The internal flux is reduced and it is usually sufficient to consider only the ...



This document provides specifications for an electrical busbar including its size, number of phases, fault level, and temperature limit. It then lists inputs for designing the busbar such as the maximum load ...



The Vertiv™ Powerbar busway system patented range of busbar trunking adds overhead power distribution to your data center, allowing increased accessibility to power loads for maintenance. Our ...

Contact Us

For more information, pricing, or custom network solutions, please contact us:

Website: <https://hashherbcafe.co.za>

Email: hello@hashherbcafe.co.za

Phone: +27 63 814 7295

Address: 15 Galaxy Road, Linbro Business Park, Johannesburg, 2065, South Africa

This document is for informational purposes only. Specifications subject to change without notice.

