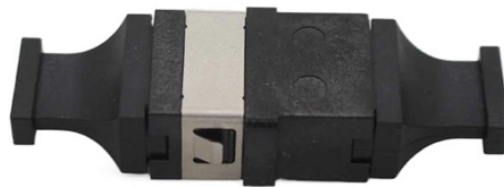


## Vehicle-mounted fiber optic DC power supply unit anti-electrostatic tracking



### Overview

The DEFCON™ Vehicle is an ultra-duty surge protection device specifically designed to protect a vehicle's electronics from damaging electromagnetic energy resulting from an electromagnetic pulse (EMP). We have designed the EMP Shield to install easily for any application. If it fails at anytime during the 10 year limited lifetime warranty, we replace it for \$50. Easy Installation: We have designed the EMP. As shown in Figure 1, Littelfuse TVS diodes provide protection for four main categories of vehicle systems: safety, performance and emissions, comfort and convenience, and hybrid vehicles.



## Vehicle-mounted fiber optic DC power supply unit anti-electrostatic



Incredibly Powerful: The EMP Shield is capable of withstanding up to 228,000 ...



The three major sources of electrical hazards in these systems are electrostatic discharge (ESD), lightning, and switching loads in power electronics circuits. Overcoming transient surges that can ...



Designed and manufactured with the highest standards for performance and reliability in TS qualified facilities. All products are AEC Q200 compliant. KYOCERA AVX has a long history of satisfying ...



Protect your car, truck, or motorcycle from EMPs, solar flares, and lightning with ...



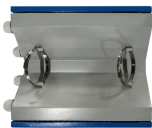
Plastic Optic Fiber is 100% immune from electrical or magnetic pickup hence it will isolate command and control digital electronics from the power switching electronics" interference usually located in UPS or ...



The DEFCON™ Vehicle is designed to limit the induced energy that would couple into your vehicle, keeping its electronics from becoming damaged, and ensuring the safety and working status of your ...



EMP Shield will ensure your vehicle operates after an EMP helping you get home, save family members, or even get supplies while others cannot. Your home will be 100% protected from lightning saving ...



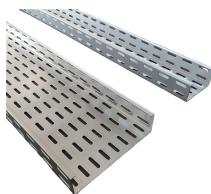
Incredibly Powerful: The EMP Shield is capable of withstanding up to 228,000 AMPS per phase. Easy Installation: We have designed the EMP Shield to install easily in ten minutes or less for any ...



Providing versatile ESD protection solutions for CAN, LIN and Flexray bus, ST's automotive-grade ESDCAN protection devices combine the best trade-off on line capacitance, package dimension and ...



Protect your car, truck, or motorcycle from EMPs, solar flares, and lightning with the EMP Shield Vehicle Protection device. Designed for easy installation, it instantly detects and diverts high-voltage surges, ...



The DEFCON Vehicle is capable of shunting away an incredible 270,000 amps of current thanks to its design and build using state-of-the-art metal oxide varistor technology.

## Contact Us

For more information, pricing, or custom network solutions, please contact us:

Website: <https://hashherbcafe.co.za>

Email: [hello@hashherbcafe.co.za](mailto:hello@hashherbcafe.co.za)

Phone: +27 63 814 7295

Address: 15 Galaxy Road, Linbro Business Park, Johannesburg, 2065, South Africa

This document is for informational purposes only. Specifications subject to change without notice.

