

## Various finishing details for cable trays

8-Port PLC Fiber Splitter Box

12-Port SC Fiber Splitter Box

Size: 235\*215\*75mm  
Material: ABS, IP65,



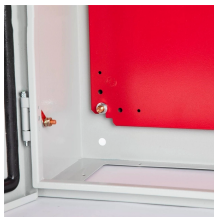
## Various finishing details for cable trays



The Ladder Tray features light, rugged, tubular steel construction. It is designed for mechanical support and strain relief in long runs of cable and creates a smooth gradual bend for cable. Rail and stringer ...



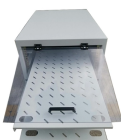
Cable Tray Technical Guide A practical guide to product selection and installation This guide for engineers and installers has been developed by ABB as a practical reference regarding cable tray ...



The most widely used coating for cable tray is galvanizing. It is cost-effective, protects against a wide variety of environmental chemicals, and is self-healing if an area becomes unprotected through cuts ...



Explore various cable tray types and sizes for electrical installations. Learn about ladder, perforated, solid-bottom, wire mesh, and channel trays in this complete guide.



This document provides general guidelines for cable trays and their installation. It discusses the different types of cable trays, including perforated and ladder types, and specifies their ...



Discover cable tray finishes like galvanized coatings, powder coating, and stainless steel, designed to protect against corrosion and enhance performance.



Not all cable trays are equivalent. The mechanical and electrical characteristics, tests, certifications, overall quality management, recommendations mentioned in this technical guide only apply to our ...



As an industry leader in cable tray, Eaton offers one of the widest ranges of cable management solutions available in the market today with its B-Line series portfolio. With unmatched quality and service, we ...



Explore all types of cable trays—ladder, perforated, basket, solid, and channel. Learn their uses, materials, pros, cons, and key differences.



The various standards STANDARD IEC 61 537 “INTERNATIONAL ELECTROTECHNICAL CONTRACTORS STANDARD FOR CABLE TRAY SYSTEMS - CABLE LADDER SYSTEMS” cable ...



Trays shall be supported at a maximum span of 2.5m by trapeze, wall, floor or channel mounting methods and will not exceed maximum loads as specified by the manufacturer.

## Contact Us

For more information, pricing, or custom network solutions, please contact us:

Website: <https://hashherbcafe.co.za>

Email: [hello@hashherbcafe.co.za](mailto:hello@hashherbcafe.co.za)

Phone: +27 63 814 7295

Address: 15 Galaxy Road, Linbro Business Park, Johannesburg, 2065, South Africa

This document is for informational purposes only. Specifications subject to change without notice.

