

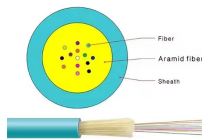
Uzbekistan OSFP optical module QSFP



Uzbekistan OSFP optical module QSFP



Two prominent form factors, QSFP+ (Quad Small Form-factor Pluggable Plus) and OSFP (Octal Small Form-factor Pluggable), represent different generations and capabilities in this domain.



C Tamar Makharashvili, Google LLC Xiao Li, Cisco Abstract The multitude of Electrical/Optical interfaces, such as QSFP or OSFP modules, lead to the accumulation of EMI in larger Switches and ...



Detailed analysis of OSFP and QSFP-DD form factors for 800G optical modules. Compare specifications, thermal management, backward compatibility, and choose the right solution ...



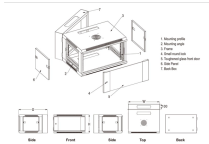
Compare QSFP-DD vs OSFP form factors for 400G/800G networks. Learn compatibility, power specs, and which optical transceiver fits your data center infrastructure.



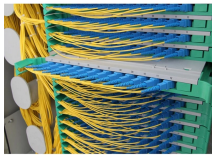
A Type 3 OSFP module provides maximum of 3.6mm of additional height in the front compared to a Type 2 module. Type 2 and Type 3 modules can provide additional space for various optical ...



Comprehensive technical analysis of NVIDIA 800G optical modules comparing QSFP-DD and OSFP form factors. Learn about compatibility, power requirements, and deployment best ...



Confused about the differences between OSFP, QSFP, and SFP? This guide explains their distinct features, applications, and helps you choose the right module for your network.



Cisco QSFP-DD and OSFP 800G coherent optical modules are supported on Cisco switches and routers. For more details, refer to the Cisco Transceiver Modules Compatibility Matrix.



As a leading solution in high-speed applications, QSFP-DD transceivers are often compared with other modules such as QSFP56, QSFP112, OSFP, and CFP2. So what are the ...



Faced with the choices between QSFP-DD and OSFP form factors, as well as SR8 and 2xSR4 solutions, many engineers and decision-makers find themselves confused. This article will ...



The OSFP module shall operate within one or more of the case temperature ranges defined in Table 8-1. The temperature ranges are applicable between 60m below sea level and 1800m above sea level.

Contact Us

For more information, pricing, or custom network solutions, please contact us:

Website: <https://hashherbcafe.co.za>

Email: hello@hashherbcafe.co.za

Phone: +27 63 814 7295

Address: 15 Galaxy Road, Linbro Business Park, Johannesburg, 2065, South Africa

This document is for informational purposes only. Specifications subject to change without notice.

