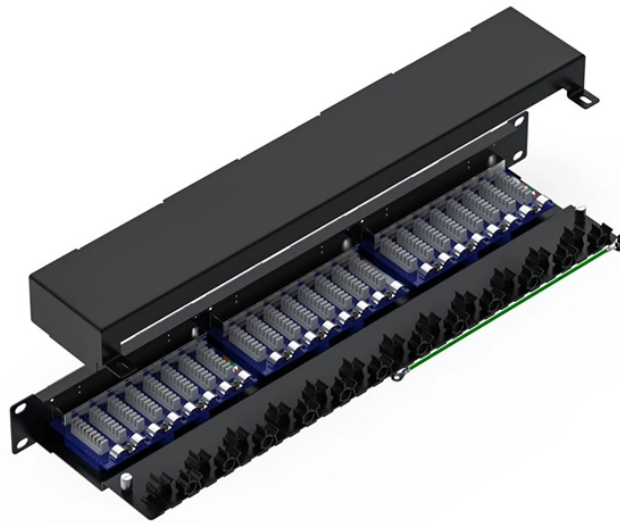


U-shaped cable in distribution box



U-shaped cable in distribution box



Organize network infrastructure with CommScope Horizontal and Vertical Cable Management Kits. Sturdy aluminum structures, troughs, spools, and trays keep cables secure and concealed.



They are made by Tyco and approved for concealing in the wall. You'll need to pick them up from a supply house or order online as they aren't at the box store. Ultimate fix would be if the run ...



When installing large insulated conductors, care must be taken to ensure that the conductor insulation is not compromised during the wire pull because the box is too small.



The patented design features a unique central track system that supports a set of tool-less accessories to provide unlimited adjustability within the cable manager, optimizing use of interior space and ...



When installing large insulated conductors, care must be taken to ensure that the conductor insulation is not compromised during the wire pull because the box is ...



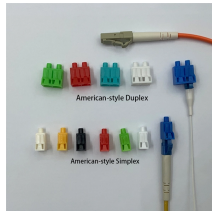
The UT cable grommet is an U-shaped cable bushing and makes it possible to ...



The UT cable grommet is an U-shaped cable bushing and makes it possible to route single pre-connectorised cables as well as standard cables with a diameter range of 4 to 11 mm into enclosures.



Follow the core layout principles to ensure that the cable distribution box network is efficient, easy to maintain, and scalable. The cable distribution box should be installed near the load ...



While managing cables in a U-shaped workstation can feel overwhelming, implementing cable trays and raceways offers a practical solution. These systems help keep your cables ...



U-shaped design remains a standard for cable terminals in modern electrical distribution. This specific geometry facilitates rapid installation and secure mechanical fastening in low to medium ...



Taking the mystery out of sizing pull boxes and junction boxes. Pull boxes, junction boxes, and conduit bodies must be sized to allow conductors 4 AWG and larger to be installed without damage to the ...



Perlegear 17" in-Wall Media Box, Electrical Box, Recessed Outlet Box and Media Enclosure for One Connect Box & Network Switches, Cable Management Kit with Cutting Template, Dust Bag & ...

Contact Us

For more information, pricing, or custom network solutions, please contact us:

Website: <https://hashherbcafe.co.za>

Email: hello@hashherbcafe.co.za

Phone: +27 63 814 7295

Address: 15 Galaxy Road, Linbro Business Park, Johannesburg, 2065, South Africa

This document is for informational purposes only. Specifications subject to change without notice.

