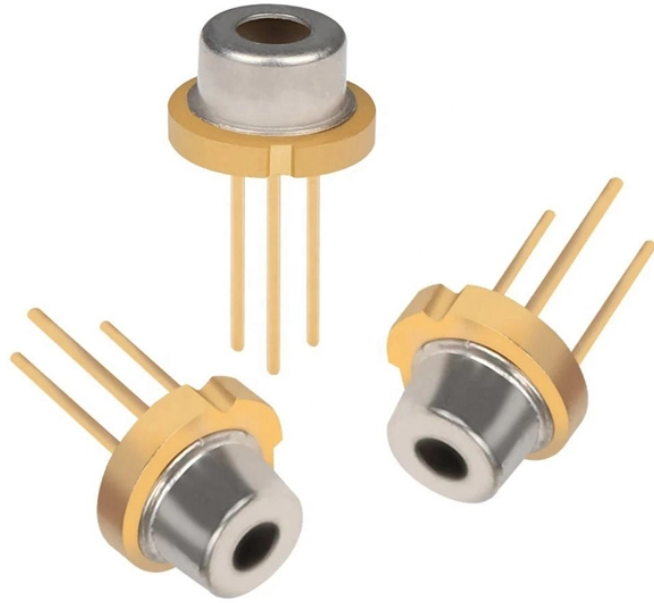


Tonga enclosed cable tray models



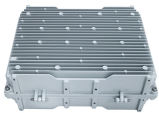
Tonga enclosed cable tray models



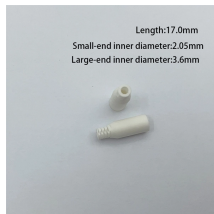
MP Husky Husky Way is an economical and easy to use fully enclosed Cable Tray System. Benefits are: Another innovative design from MP Husky - the Leader in Cable Tray Systems!



Over the past 55+ years, MP Husky US Cable Tray has engineered and manufactured the most reliable, highest quality, cost effective and innovative cable trays systems available.



Thomas & Betts offers a wide range of cable tray wiring systems for you to choose from. They are Reliable, Adaptable, Low-Maintenance, Low-Cost and Safe choices. Cable tray wiring systems offer ...



Our cable tray systems securely hold and protect cables and come in many models and sizes, solid bottom and ventilated.



From heavy power cable pathways on oil drilling platforms to data center cabling, explore the cable tray that's strong yet easy to install. Fast installation with dependable support.



Explore cable tray systems and accessories for organized, accessible cable routing in commercial and industrial environments.



Galvanized Channel Cable Tray System is a fully enclosed cable tray made of a GI plate. It can effectively protect the cable from dust, moisture, corrosion, fire, and other external factors.



The design and cost of the cable tray is greatly affected by this designation. In order to determine the most appropriate and economical system, a class should be selected that reflects the actual total ...



Discover comprehensive enclosed cable tray solutions offering superior environmental protection, enhanced security, and cost-effective cable management for commercial and industrial facilities. ...



Our cable tray design considerations guide details key factors to consider when designing cable tray systems for industrial and commercial applications. Browse or download the cable tray catalog for ...

Contact Us

For more information, pricing, or custom network solutions, please contact us:

Website: <https://hashherbcafe.co.za>

Email: hello@hashherbcafe.co.za

Phone: +27 63 814 7295

Address: 15 Galaxy Road, Linbro Business Park, Johannesburg, 2065, South Africa

This document is for informational purposes only. Specifications subject to change without notice.

