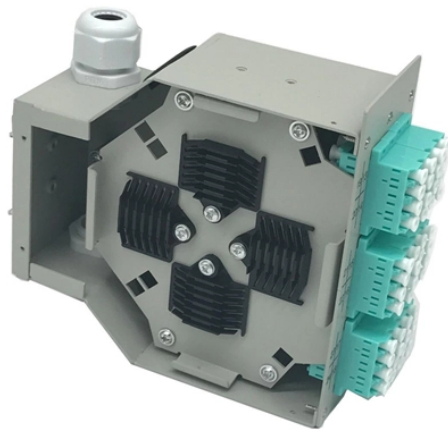


Three switches share one fiber optic cable



Three switches share one fiber optic cable



For example, if you have three optical fiber access switches, you need to have three cores. (actually use a four core optical cable) This is because apart from one-core optical fiber, there are ...



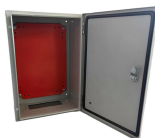
A single 6 strand fiber can only connect 3 switches back to the core. How many switches do you plan to connect? A star is great for a limited number of switches...I have maybe 20 coming ...



An MTP®/MPO cable is a high-density fiber optic cable that uses multi-fiber connector to transmit multiple optical signals through a single interface. Usually, one MTP®/MPO connector has ...



I did not want to run fiber directly from device to device but instead install fiber outlets in the rooms. There are different options for this but I opted for the “FTTH Squeeze OTO” which is a ...



In cases where the distance between switches exceeds the total cable length, you can use the LC-LC coupler to connect two fiber optic cables together. For example, insert the connector ...



For a small fee (the procurement of the modules and the circulator) you can split/splice one physical fibre optic cable into multiple pairs. The downside is that once you loose your one-and ...



SFP transceiver modules are specific to the type of fiber being connected (either single mode or multimode). Choose an SFP module based on the fiber optic cabling that will be connected to the ...



Troubleshoot fiber optic issues like a pro with our expert guide. Resolve common problems and ensure seamless connectivity.



However, one of the affected circuits got a small 10-Port switch that covered 3 workstations on a shared workspace in the middle of a manufacturing floor/warehouse.



SFP modules provide the fiber optic connection for network switchers with fiber optic (SFP) ports. The modules are swappable and are specific to either duplex multimode fiber or duplex single mode fiber.

Contact Us

For more information, pricing, or custom network solutions, please contact us:

Website: <https://hashherbcafe.co.za>

Email: hello@hashherbcafe.co.za

Phone: +27 63 814 7295

Address: 15 Galaxy Road, Linbro Business Park, Johannesburg, 2065, South Africa

This document is for informational purposes only. Specifications subject to change without notice.

