

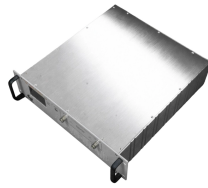
Thickness Standard for Ladder-Type Cable Trays



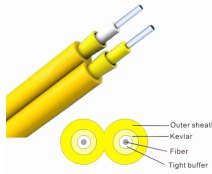
Thickness Standard for Ladder-Type Cable Trays



NEMA VE 1-2017 Specifies requirements for metal cable trays and associated fittings designed for use in accordance with the rules of Canadian Electrical Code, Part I and the National Electrical Code®



The document provides a technical data sheet for cable trays including ladder and perforated types. It lists specifications for material, thickness, dimensions, loading ...



The document provides a technical data sheet for cable trays including ladder and perforated types. It lists specifications for material, thickness, dimensions, loading capacity, fittings and accessories.



Ladder shall have an overall height of 4" (100 mm). Minimum load depth shall be 3.5" (90 mm). Widths shall be 8", 12", 16", 20" and 24" (200, 300, 400, 500 and 600 mm)



Our wind certification report provides you with list of acceptable B-Line series cable tray supports, fittings and covers based off of the environmental conditions, cable loading, and type of cable tray in your ...



Width from 150 mm to 1000 mm Height from 40 mm to 100 mm Thickness from 1.2 mm to 2.0 mm



NEMA VE 1-2017 standard for metal cable tray systems. Covers construction, materials, dimensions, load capacity, and testing.



The National Electrical Manufacturers Association (NEMA) VE 1 standard is the primary guideline for specifying cable tray systems, particularly defining load capacity and span capabilities.



Ladder cable tray offer high strength as per specification which made them perfect for heavy-duty power distribution in industries, manufactured using pre-galvanized mild steel.



This document specifies requirements and tests for cable tray systems and cable ladder systems intended for the support and accommodation of cables and possibly other electrical equipment in ...



Straight section ladder tray shall be prefabricated structures made from fiberglass reinforced plastic, consisting of two longitudinal members (side rails) connected by transverse rungs, meeting all the ...



Cable tray length is selected based on the load to be supported, the distance between the supports (also referred to as the span), and handling and installation constraints.

Contact Us

For more information, pricing, or custom network solutions, please contact us:

Website: <https://hashherbcafe.co.za>

Email: hello@hashherbcafe.co.za

Phone: +27 63 814 7295

Address: 15 Galaxy Road, Linbro Business Park, Johannesburg, 2065, South Africa

This document is for informational purposes only. Specifications subject to change without notice.

