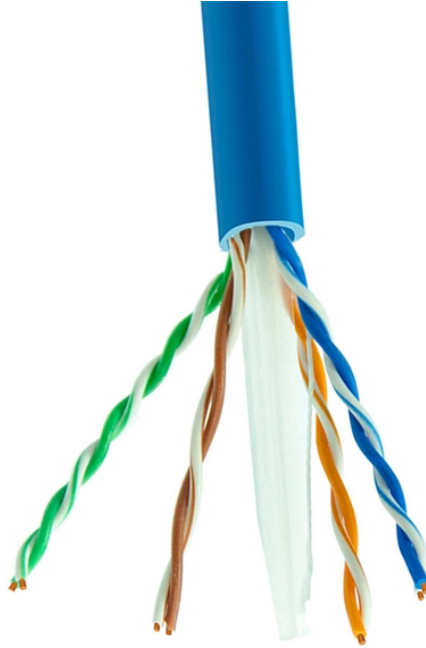


## There are several methods for removing the pigtail fiber



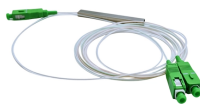
## There are several methods for removing the pigtail fiber



Multimode fibers are relatively easy to terminate, so field termination is generally done by installing connectors directly on tight buffered fibers using the procedures outlined below.



Learn how to terminate fiber optic cable with connectors and splicing. Discover tools, techniques, and tips for precise termination.



Learn about the different fiber termination methods and the factors influencing which is best for your application.



We terminate fiber optic cable two ways - with connectors that can mate two fibers to create a temporary joint and/or connect the fiber to a piece of network gear or with splices which create a permanent ...



Confused about fiber optic pigtails—which connector type, which polish, fusion or mechanical splice? Our guide covers LC vs SC, APC vs UPC, splicing methods, and real-world use ...



In this guide, we'll walk you through the entire process of preparing fiber optic cable for splicing and termination to fiber connectors. We'll explore the necessary tools, safety precautions, ...



Once the coated fiber is exposed, remove the protective coatings to start the actual fiber splicing. Most coated fibers can be stripped using mechanical or chemical methods.



Most factory-made connectors, such as on pigtails you purchase from a distributor, are epoxy/polish terminations. The fiber is glued into the connector ferrule with a heat-cured epoxy, and the end of the ...



Master the art of fiber termination. Learn how to splice fiber optic pigtails using fusion splicing, follow the color code, and ensure low insertion loss.



Explore fiber pigtail types like LC, ST, and SC connectors for various applications. Learn about fiber optic connectors and termination methods.

## Contact Us

For more information, pricing, or custom network solutions, please contact us:

Website: <https://hashherbcafe.co.za>

Email: [hello@hashherbcafe.co.za](mailto:hello@hashherbcafe.co.za)

Phone: +27 63 814 7295

Address: 15 Galaxy Road, Linbro Business Park, Johannesburg, 2065, South Africa

This document is for informational purposes only. Specifications subject to change without notice.

