

## The router's fiber optic signal is displayed in red



### Overview

If the LOS light on your router is blinking red, it usually means there's a problem with your internet connection—specifically, a loss of signal. When it's green and steady, everything is fine. Before you panic or call tech support, there are several simple fixes you can try at home that often solve this problem in minutes. But don't despair! This guide will walk you through the most common causes of router. Troubleshoot your router's red light with these steps. Normally, each light reflects a specific function: Power Light: Informed if the router is powered on. Wi-Fi Light: Shows the status and.



## The router s fiber optic signal is displayed in red



Normally, the color coding for router lights is straightforward: green means everything is functioning correctly, yellow may indicate a warning, and red often denotes a significant issue that ...



Experiencing a solid red broadband light on your router can be frustrating and indicates a disruption in your internet connection. Understanding the possible causes and fixes for this issue is ...



This guide will walk you through what the LOS light means, why it blinks red and step-by-step instructions on how to resolve the issue, including resetting your router.



This guide will walk you through the most common causes of router red lights and equip you with the knowledge to banish the red glow and restore your internet connection.



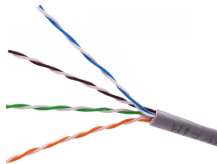
How to Fix Red Light on My Router A red light on your router can be a source of frustration and confusion. It often indicates that something is wrong with your internet connection or ...



If the LOS light on your router is blinking red, it usually means there's a problem with your internet connection—specifically, a loss of signal. This typically happens with fiber optic or DSL ...



A red light on your modem typically means it can't detect an internet signal and can't connect. To fix this issue, you'll need to go through several troubleshooting steps.



Quick answer: A red light means no WAN connection. Check your modem first, then the Ethernet cable in the WAN port. Restart the modem, wait 60 seconds, then restart the router. If the ...



This guide on how to fix router red light, will walk you through the common reasons behind the red light and provide step-by-step solutions to bring your router back online.



This guide will walk you through what the LOS light means, why it blinks red and step-by-step instructions on how to resolve the issue, including ...



That blinking red LOS light means your router has lost its connection to your internet provider's network. Before you panic or call tech support, there are several simple fixes you can try at ...

## Contact Us

For more information, pricing, or custom network solutions, please contact us:

Website: <https://hashherbcafe.co.za>

Email: [hello@hashherbcafe.co.za](mailto:hello@hashherbcafe.co.za)

Phone: +27 63 814 7295

Address: 15 Galaxy Road, Linbro Business Park, Johannesburg, 2065, South Africa

This document is for informational purposes only. Specifications subject to change without notice.

