

The distribution box should be hung on



Overview

The proper installation of a distribution box involves placing it at the right height to ensure safety and convenience. Let's see what factors need to be taken care of when choosing the installation place. Ground-mounted foundations should be 50 to 100 mm above ground level. Just like travelers need clear pathways and safety protocols, your electrical circuits need proper management to prevent chaos.



The distribution box should be hung on



"Getting your distribution box installation right isn't just about passing inspection - it's about sleeping soundly knowing you've eliminated hidden fire hazards that could put your family at risk," explains ...



The distribution box should be affixed using expansion bolts. The length of the bolts should account for the depth of the wall (75-150 millimeters), the thickness of the box's base, and the ...



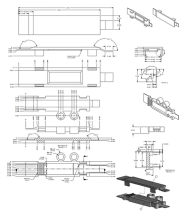
The proper installation of a distribution box involves placing it at the right height to ensure safety and convenience. Mounting it 4.5 to 5.5 feet (1.4 to 1.7 meters) high makes it easily accessible without ...



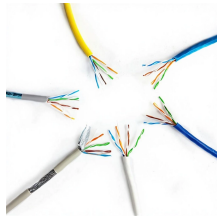
The outdoor distribution box should be firmly installed on the bracket or foundation. The height of the bottom of the box should not be less than 1.0m from the ground, and measures should ...



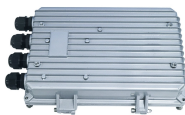
The distribution cabinet (box) shall be made of non combustible materials. The installation position of the distribution cabinet shall avoid direct sunlight, splash and moisture, and there shall be sufficient ...



Learn how to install a distribution box safely and correctly. Covers wiring, placement, standards, and expert tips for a compliant setup.



The best height for installing residential distribution boxes is 1.5 meters above the ground, while for industrial distribution boxes, the height depends on the space and the equipment ...



Electrical boxes must provide sufficient space for conductors and devices to prevent overheating and insulation damage. Overcrowding restricts heat dissipation and increases fire risk.



Distribution boxes, switch boxes should be installed in dry, ventilated and room temperature places; shall not be installed in the role of serious damage to the gas, smoke, vapour, ...



Box installation: Place the cable distribution box on the installation surface, align with the expansion bolt position, and tighten the screw firmly. Ensure that the box is level and stable, without ...

Contact Us

For more information, pricing, or custom network solutions, please contact us:

Website: <https://hashherbcafe.co.za>

Email: hello@hashherbcafe.co.za

Phone: +27 63 814 7295

Address: 15 Galaxy Road, Linbro Business Park, Johannesburg, 2065, South Africa

This document is for informational purposes only. Specifications subject to change without notice.

