

## The distribution box is installed on an iron pole



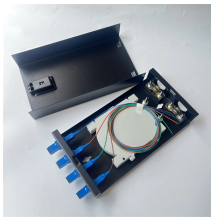
### Overview

A single phase distribution box helps control and share electricity in your home or business. The main parts inside are circuit breakers, neutral and earth bars, and safety devices. Residential utility poles are tall structures that are used to support various utility cables and electrical wires in residential areas. Each component plays a crucial role in ensuring the safe and reliable transmission of electricity from the power source to homes, businesses, and other. The power lines are made of an aluminum alloy and are grayish in color. Power lines do not touch the utility poles. Such installations provide protection against environmental elements and improve access for maintenance, making them ideal for certain environments. Proper knowledge is crucial for.

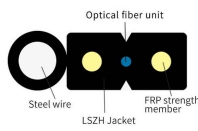
## The distribution box is installed on an iron pole



A distribution board or distribution box is where the main power supply is distributed to multiple loads. And all the switching and protective devices are installed in the distribution box.



A single phase distribution box controls and protects home or office circuits. Learn its definition, main parts, and how it ensures electrical safety.



Discover how power pole diagrams can help you understand the structure and functionality of power poles and electrical distribution systems. Explore different types of power pole diagrams and their ...



Pole setting requires careful planning, adherence to safety protocols, and regulatory compliance for their stability and longevity. Here's a look at the entire process to help power providers conduct safe and ...



In this video, I'll guide you through the complete wiring diagram for a single-phase house distribution box.



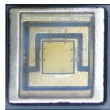
Learn how to install a distribution box safely and correctly. Covers wiring, placement, standards, and expert tips for a compliant setup.



Perfecting your pole-mounted meter box installation is crucial—unveil expert tips and essential considerations for a safe, efficient setup.



Explore a comprehensive guide to residential electric meter box wiring diagrams, offering clear instructions for safe and efficient installation.



There are two types of construction: one in which insulators are attached directly onto the pole, and the other in which insulators are attached to the crossarms.



Perfecting your pole-mounted meter box installation is crucial—unveil expert tips and essential considerations for a safe, efficient setup.



Residential utility poles contain multiple components, including crossarms, insulators, transformers, and communication attachments. The crossarms provide a platform for the cables and wires to be ...

## Contact Us

For more information, pricing, or custom network solutions, please contact us:

Website: <https://hashherbcafe.co.za>

Email: [hello@hashherbcafe.co.za](mailto:hello@hashherbcafe.co.za)

Phone: +27 63 814 7295

Address: 15 Galaxy Road, Linbro Business Park, Johannesburg, 2065, South Africa

This document is for informational purposes only. Specifications subject to change without notice.

