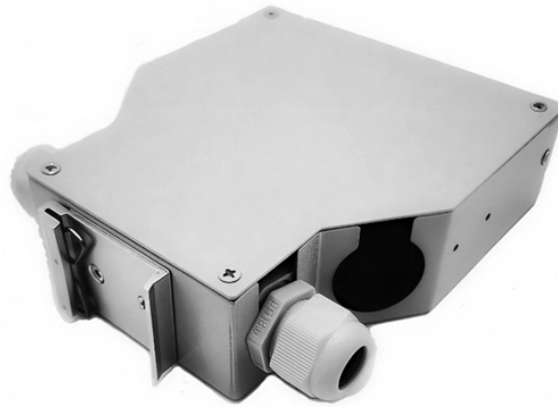


The Role of Server Room Top-of-Rack Pricing



Overview

Designing an efficient data center network involves choosing the right architecture to balance scalability, manageability, and cost. Two common approaches— Top of Rack (ToR) and End of Row (EoR) —offer distinct advantages depending on your operational priorities. Picture your data center's network as a sprawling highway system, where servers and devices are. In the clandestine chambers of high-performance computing environments, a quiet revolution has taken root. Traditional network blueprints once mirrored static, centralized ideologies. To budget effectively and get the best value, it's essential to understand these cost drivers. This article will break down each factor so you can make informed decisions. By the end, you will have the. □□ What Is a ToR (Top-of-Rack) Switch?

A ToR switch (Top-of-Rack switch) is a network switch installed at the top or upper section of a server rack.

The Role of Server Room Top-of-Rack Pricing



This guide will explore the cost breakdown for rack and stack solutions, factors that influence pricing, and how companies can optimize their setup costs for maximum ...



A ToR switch (Top-of-Rack switch) is a network switch installed at the top or upper section of a server rack. It connects all servers within the rack using short copper or optical cables and ...



Top-of-Rack (ToR) switching is useful in achieving scalability and redundancy in data center networks. This design promotes the easy addition of ...



Designing an efficient data center network involves choosing the right architecture to balance scalability, manageability, and cost. Two common approaches— Top of Rack (ToR) and End of Row (EoR) ...



The primary elements that make up colocation pricing include the physical space you lease (such as rack units or full cabinets), the amount of power your equipment consumes, the bandwidth ...



Top-of-rack switching is an architecture design that uses hardware to connect switches in the same or nearby rack. Learn pros, cons and deployment options.



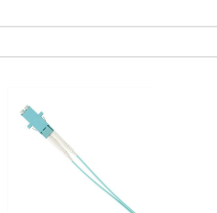
This blog compares end-of-row vs. top-of-rack deployments based on crucial factors like cost, management complexity, scalability, and resilience to help organizations choose the right approach ...



This guide will explore the cost breakdown for rack and stack solutions, factors that influence pricing, and how companies can optimize their setup costs for maximum efficiency.



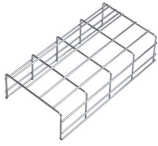
Top-of-Rack (ToR) switching is useful in achieving scalability and redundancy in data center networks. This design promotes the easy addition of racks, thus allowing scaling of resources ...



Colocation data center pricing depends on various factors, including space, power, bandwidth, and location. To budget effectively and get the best value, it's essential to understand ...



With its ability to reduce latency, improve scalability, enhance security, and promote energy efficiency, Top-of-Rack switching is poised to remain a vital component of the data center infrastructure ...



Top-of-rack (ToR) switching solves this problem by placing network switches directly within server racks. This approach streamlines connections, improves performance, and makes your data ...

Contact Us

For more information, pricing, or custom network solutions, please contact us:

Website: <https://hashherbcafe.co.za>

Email: hello@hashherbcafe.co.za

Phone: +27 63 814 7295

Address: 15 Galaxy Road, Linbro Business Park, Johannesburg, 2065, South Africa

This document is for informational purposes only. Specifications subject to change without notice.

