

Tanzania Edge Data Center Explosion-Proof Installation Solution



Tanzania Edge Data Center Explosion-Proof Installation Solution



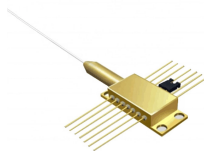
Versatile, shock-resistant, and explosion-proof lighting with a slim design, the XLN17-EM Series can be mounted in various hazardous locations, ranging from mines to petrochemical facilities.



Our comprehensive range of products and solutions caters to a wide range of applications, including cables, cable accessories, transformers, cable fittings, earthing & lightning systems, explosion-proof ...



Kleev''s explosion-proof enclosures are meticulously engineered to house various types of electrical and electronic equipment. These enclosures are designed not only to contain internal explosions but also ...



This is the perfect solution for securing massive IT infrastructures, to be implemented outside the company building. It suits all requirements - a permanent solution, a backup or a temporary data centre.



In close partnership with you, our experienced experts in our Solution Engineering Centers (SEC) plan, develop and design engineered solutions for explosion-hazardous areas, including certification.



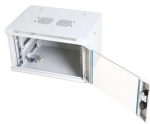
Background Wingu Africa is a service through East Africa's first and only Tier 3 carrier-neutral data center ecosystem, providing unparalleled access to cable systems, international carriers and cloud ...



Here, intrinsically safe systems and explosion-proof components are critical. Epic Engineering provides ESE systems and grounding networks meeting IEC and NFPA standards for ...



STI offers a full line of firestopping solutions that compliment your Data Center design, exceeding code requirements and take into account the realities of Data Center Operations.



HEXLON provides ATEX and IECEX certified explosion-proof electrical equipment, ensuring safety and reliability in hazardous areas.



From substation construction to power line installations, we ensure uninterrupted, high-quality power supply with leading-edge technologies. Empower homes with secure, efficient power distribution and ...

Contact Us

For more information, pricing, or custom network solutions, please contact us:

Website: <https://hashherbcafe.co.za>

Email: hello@hashherbcafe.co.za

Phone: +27 63 814 7295

Address: 15 Galaxy Road, Linbro Business Park, Johannesburg, 2065, South Africa

This document is for informational purposes only. Specifications subject to change without notice.

