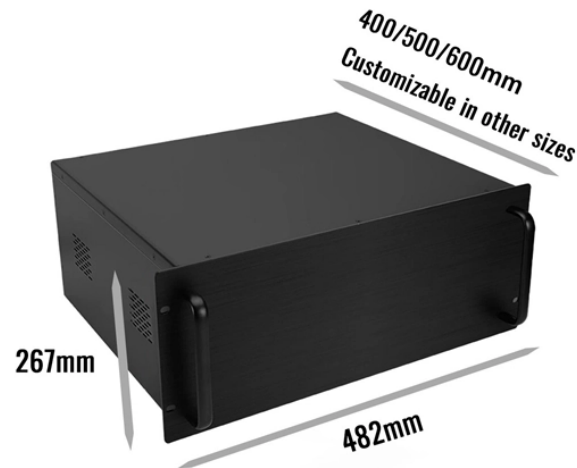


Swiss-branded bend-insensitive fiber optic cable G 657A2



Swiss-branded bend-insensitive fiber optic cable G 657A2



G.657A2 Bend Insensitive 250um Bare Optical Fiber for FPV Drone and FTTH Descriptions:The FPV Fiber Optic G.657.A2 Bend-Insensitive Single-Mode Fiber) is a cutting-edge solution designed to ...



In this post, we'll break down the differences, applications, cost considerations, and buyer recommendations to help purchasing managers, network engineers, and contractors make the right ...



ions in ducts and on trays and can be direct buried with sand back-filling in outdoor applications. The cable features corrugated steel tape armor for rodent protection



Let's examine the design of bend-insensitive multimode fiber (which we will usually call by its acronym BI MMF) that shows the technique. In regular graded index multimode fiber, there are many modes (or ...



ClearCurve bend-insensitive fibers are compliant with ITU-T Recommendations G.652.D and G.657, providing superior installation speed and efficiency, and greater successful installations in homes and ...



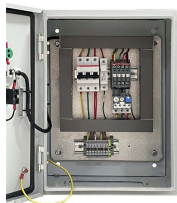
Not only that, the mode field diameter (MFD) of the fiber is consistent with the standard G.652 single-mode fiber, which makes it have low connection loss with G.652 optical bare fiber, including splice ...



ClearCurve bend-insensitive fibers are compliant with ITU-T Recommendations G.652.D and G.657, providing superior installation speed and efficiency, and ...



Explore G.657.A2 bend-insensitive single-mode optical fiber for FTTH, dense indoor routing, compact terminal boxes, and drone fiber or FPV tether systems. Learn key specs, bend performance, ...



BendBright™ XS (G.657.A2 and G.652.D)
Description Truly bend-insensitive fibre, fully backwards compatible



Bend-Insensitive Single-Mode Fiber is designed with a minimum bend radius of 7.5 mm, delivering exceptional bend performance and minimal signal loss. Fully compatible with G.652 single-mode ...



The EasyBand® Plus's bending insensitive feature not only guarantees L-band applications but also allows for easy installation without excessive care when storing the fibre especially for FTTH ...

Contact Us

For more information, pricing, or custom network solutions, please contact us:

Website: <https://hashherbcafe.co.za>

Email: hello@hashherbcafe.co.za

Phone: +27 63 814 7295

Address: 15 Galaxy Road, Linbro Business Park, Johannesburg, 2065, South Africa

This document is for informational purposes only. Specifications subject to change without notice.

