

Sudan Special Optical Cable G 652D



Overview

The standard specifies the geometrical, mechanical, and transmission attributes of a single-mode optical fibre as well as its cable. The fibre has zero-dispersion wavelength around 1310 nm as per how it was designed, however it can also be used in the 1550 nm wavelength region.



Sudan Special Optical Cable G 652D



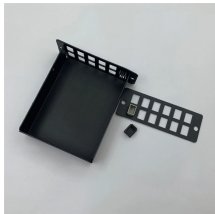
This Specification covers the design requirements and performance standard for the supply of optical fibre cable in the industry. ARTIC ensures a stable quality control system for our cable products ...



Optical properties of the SM fibre are achieved through a germanium doped silica based core with a pure silica cladding which meets ITU-T G652D, UV curable acryla-te protective coating is applied ...



This double armoured fibre optic submarine cable is part of the URC-1 family. The cable is intended for use in areas where moderate to high protection is required (typically system shore ends). The cable ...



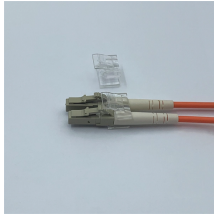
G.652.D Single-Mode Optical Fibre Specifications ... *Values for cabled fibre, local attenuation discontinuity $\leq 0.1\text{dB}$ Note: Due to OTDR measurement uncertainty B3 International cannot guarantee ...



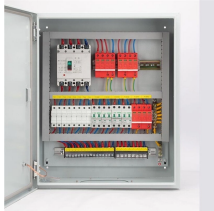
“Leviton is dedicated to designing, developing and manufacturing sustainable high performance structured cabling and specialty cabling solutions.” The information contained in this document is ...



Properties of cable with standard Enhanced SM fibre ESMF, low water peak single mode fibre G652D, OS2



It lists the cable construction, loose tube and fibre colour codes, product information for cables with 24 and 48 fibres, and test results for mechanical and environmental requirements.



Explore the differences between G.652.D, G.657.A1, and G.657.A2 fiber optic cable specifications. Learn about their unique characteristics, bend performance, and applications to make ...

Contact Us

For more information, pricing, or custom network solutions, please contact us:

Website: <https://hashherbcafe.co.za>

Email: hello@hashherbcafe.co.za

Phone: +27 63 814 7295

Address: 15 Galaxy Road, Linbro Business Park, Johannesburg, 2065, South Africa

This document is for informational purposes only. Specifications subject to change without notice.

