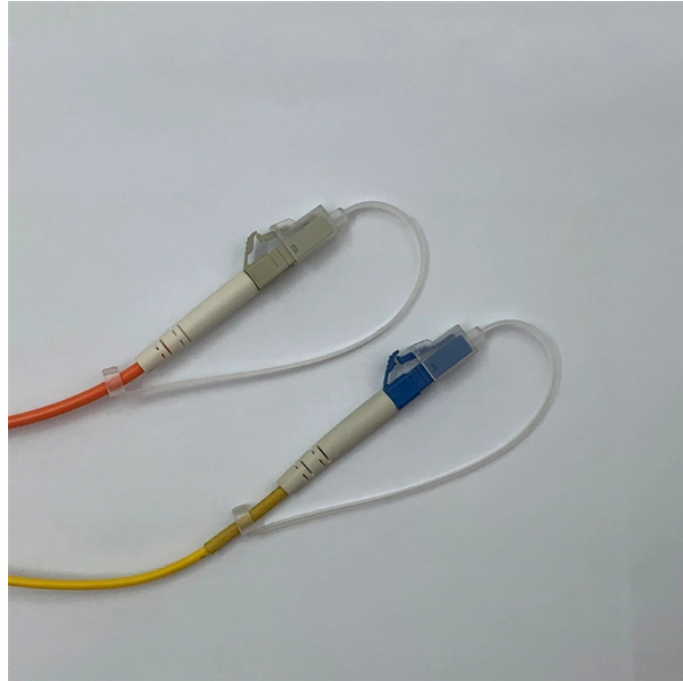


## Straight-through cable tray materials



## Straight-through cable tray materials



The material properties of an alloy depend on the distribution of each type of element present, giving each alloy specific weight, strength, toughness, hardness, corrosion and fatigue attributes. We offer ...



MP Husky's cable tray selector for choosing the correct tray type (ladder, solid bottom, perforated, wire mesh) and size based on load, cable type and installation requirements.



Learn how to choose the best cable tray system for your needs. Explore types, materials, installation tips, and NEC compliance in this expert guide.



Learn how to choose the best cable tray system for your needs. Explore types, materials, installation tips, and NEC compliance in this expert guide.



Straight Section, Bulletin F23 (stainless Type 1 Clean Tray? Cable Tray), Size/dims: 3.00x3.00x120.00, Material/finish: Ss Type 304



Cable tray must be capable of supporting not just the weight of the cable, but also the weight of any equipment or materials attached to the cable tray. Additionally, dynamic environmental elements ...



In designing supports for a cable tray system, consideration should be given to the loads associated with future cable additions and any additional loading that may be applied to the cable tray system (e.g., ...



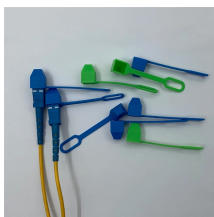
Selecting the right material for a cable tray is crucial as it impacts durability, cost, installation, and long-term performance. Among the most common materials are aluminium, steel, ...



NEMA VE 1-2017 Specifies requirements for metal cable trays and associated fittings designed for use in accordance with the rules of Canadian Electrical Code, Part I and the National Electrical Code®



Explore all types of cable trays—ladder, perforated, basket, solid, and channel. Learn their uses, materials, pros, cons, and key differences.



The Ladder Tray features light, rugged, tubular steel construction. It is designed for mechanical support and strain relief in long runs of cable and creates a smooth gradual bend for cable. Rail and stringer ...

## Contact Us

For more information, pricing, or custom network solutions, please contact us:

Website: <https://hashherbcafe.co.za>

Email: [hello@hashherbcafe.co.za](mailto:hello@hashherbcafe.co.za)

Phone: +27 63 814 7295

Address: 15 Galaxy Road, Linbro Business Park, Johannesburg, 2065, South Africa

This document is for informational purposes only. Specifications subject to change without notice.

