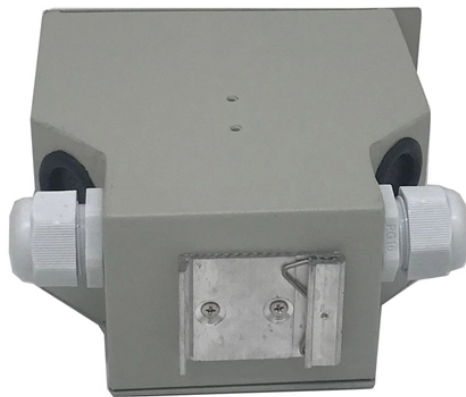


Steel Fire-Resistant Composite Cable Tray



Steel Fire-Resistant Composite Cable Tray



Introduction to Steel Steel has played a pivotal role in shaping our modern civilization. In this article, we will explore the history of steel, providing insights and information on steel production, types of steel, ...



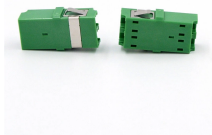
Steel is a metallic alloy of iron and carbon used in a wide variety of applications. Learn more about it here.



Build fire-rated enclosures around tray runs, transitions, and penetrations to block flame and smoke movement. Integrate coverings with existing fireproofing and firestopping systems for full compliance ...



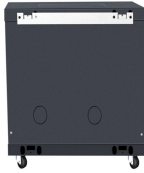
In this guide, we'll dive into everything you need to know about using composite cable trays in harsh conditions, including materials, installation, fire safety, cost considerations, and real ...



Steel is the world's most important engineering and construction material. It is used in every aspect of our lives; in cars and construction products, refrigerators and washing machines, cargo ships and ...



Steel is vital to a modern, sustainable society. The same steel that enables manufacturers to make lighter, more fuel-efficient vehicles, and taller, safer structures is also continuously recyclable.



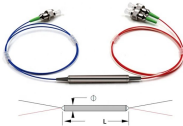
Boost your electrical needs with our Fire Rated Cable Trays that are tested for fire resistance under real-world conditions. Designed to perform even with cables installed and connected.



Explore the importance of fire-resistant cable trays in high-risk environments. Learn about the best materials and practices to ensure maximum safety and performance in fire-sensitive areas.



Explore sheet steel and wire mesh cable tray for robust cable management. Ideal for various environments, ensuring safety, efficiency, and durability.



Composite Material Use: Growth in FRP (Fiber Reinforced Polymer) trays for excellent corrosion and fire resistance. Hybrid Material Designs: Combining steel strength with specialized fire-retardant coatings ...



These sheets are easily installed using common tools and fasteners. Ideal for firestopping penetrations such as cable trays and conduit, the sheets feature intumescent material bonded to 28-gauge ...



Steel, alloy of iron and carbon in which the carbon content ranges up to 2 percent (with a higher carbon content, the material is defined as cast iron). By far the most widely used material for ...



Choose from our selection of cable trays, including over 850 products in a wide range of styles and sizes. Same and Next Day Delivery.



WebTelecoms Cabling

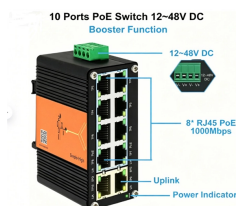
Cable trays are intended for the construction of fire-resistant cable paths. Do you need help with your purchase? The HERMI team will be happy to advise you and help you find the most suitable solution ...



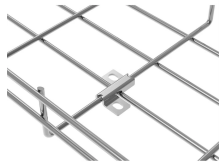
What is steel? Made from the combination of iron and carbon, as well as a variety of other elements, steel is one of the world's most utilized materials.



Learn how to read a steel gauge chart, compare steel thicknesses, and choose the right gauge for your project with clear explanations and conversions.



Which cable tray material is best for fire resistance? Hot dip galvanized steel and stainless steel cable trays are commonly preferred because they provide excellent fire resistance, durability, ...



Do you have the best type of steel for your project? Use our chart to help & learn more about the various steel grades, their applications, & ASTM standards.



The meaning of STEEL is commercial iron that contains carbon in any amount up to about 1.7 percent as an essential alloying constituent, is malleable when under suitable conditions, and is distinguished ...

Contact Us

For more information, pricing, or custom network solutions, please contact us:

Website: <https://hashherbcafe.co.za>

Email: hello@hashherbcafe.co.za

Phone: +27 63 814 7295

Address: 15 Galaxy Road, Linbro Business Park, Johannesburg, 2065, South Africa

This document is for informational purposes only. Specifications subject to change without notice.

