

## Standards for Tunnel Maintenance Distribution Boxes

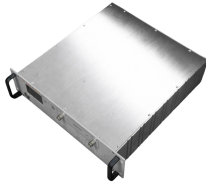


### Overview

To help safeguard tunnel users and to ensure reliable levels of service, the FHWA developed the National Tunnel Inspection Standards (NTIS), the Tunnel Operations Maintenance Inspection and Evaluation (TOMIE) Manual, and the Specifications for National Tunnel . To help safeguard tunnel users and to ensure reliable levels of service, the FHWA developed the National Tunnel Inspection Standards (NTIS), the Tunnel Operations Maintenance Inspection and Evaluation (TOMIE) Manual, and the Specifications for National Tunnel . Tunnels represent a significant financial investment with challenging design, construction, and operational issues. Tunnels that are not adequately maintained usually require more costly and extensive repairs. To help safeguard tunnel users and to ensure reliable levels of service, the FHWA. unnel closures, increase public safety, and ensure adequate levels of service. It is commonly. Power supply and distribution in a tunnel Tunnels are home to a variety of applications that need to be supplied with power in a high-availability configuration. Phasing and sequencing is a. The work of Standardization) ha to be preparing International is a worldwide Standards federation is normally of standards governmental and non-governmental, with

the International Electrotechnical Commission (IEC) on all matters of the liaison represented interested on in a subject committee.

## Standards for Tunnel Maintenance Distribution Boxes



Mehr über unsere Lösungen zur sicheren und hochverfügbaren Energieverteilung im Tunnel. Ausfälle mithilfe von hochverfügbaren Netzschutzeinrichtungen vermeiden.



Accordingly, the Manual is organized as presented below: Chapter 1 is an introductory chapter and provides a general overview of the planning process of a road tunnel project including alternative ...



This course was adapted from the Federal Highway Administration (FHWA) agency of the Department of Transportation, document "Tunnel Operations, Maintenance, Inspection, and Evaluation (TOMIE) ...



In accordance with the NTIS, this Manual describes methods for improving the safety and performance of roadway tunnel operation, maintenance, inspection, and evaluation programs.



Figure 1.3 - Double box tunnel with two traffic lanes and one safety walk in each box. Depending on location and loading conditions, center wall may be solid or composed of consecutive columns.



This manual provides guidelines on tunnel operations, maintenance, inspection, and evaluation that help ensure tunnels remain in safe condition and continue to provide reliable levels of service.



If the sum of the diameters of all conduits entering the box exceeds the maximum allowed conduit rating, then a larger box or multiple boxes must be used. Use the smallest junction box necessary for the ...



Box trench: Where cost of a standard tunnel cannot be justified, box trenches, and crawl trenches are occasionally used. Access and maintainability must be considered.



Smart community infrastructures — Operation and maintenance of utility tunnels Infrastructures urbaines intelligentes — Exploitation et maintenance des tunnels techniques Reference number ISO ...



The Design-Builder shall obtain an approved electrical distribution bulletin (EDB) to notify the MTA operating departments before any electrical equipment, feeders or circuits are installed, removed, ...



§ 650.503 Applicability. The National Tunnel Inspection Standards (NTIS) in this subpart apply to all structures defined as highway tunnels on all public roads, on and off Federal-aid highways, including ...



CIP and precast concrete box culverts (CBCs) and wingwalls shall be designed according to the applicable M-Standard drawings and design criteria. Designs not meeting the standard sizes, ...

## Contact Us

For more information, pricing, or custom network solutions, please contact us:

Website: <https://hashherbcafe.co.za>

Email: [hello@hashherbcafe.co.za](mailto:hello@hashherbcafe.co.za)

Phone: +27 63 814 7295

Address: 15 Galaxy Road, Linbro Business Park, Johannesburg, 2065, South Africa

This document is for informational purposes only. Specifications subject to change without notice.

