

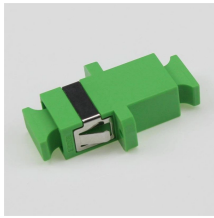
Standards for Monitoring Fiber Optic Cable Ducts



Overview

100 describes characteristics, construction, test methods, and performance criteria of optical fibre cables installed by pulling method for duct and tunnel application. Note that Recommendation ITU-T L. 10, Ed. WARNING: Follow all OSHA regulations concerning confined space entry and work. When working in manholes, precautions must be taken to limit the amount of exposure to lead. Strictly observe your company's lead handling procedures to eliminate this hazard. (FOA) was founded in 1995 to help develop the workforce to build the fiber optic networks to support a rapid expansion in communications and the Internet. The charter of the FOA was to promote professionalism in fiber optics through education, certification, and. Digital tools, such as IQGeo's Fiber Network Management System, now offer smarter Fiber Optic Solutions for tracking, organizing, and maintaining networking infrastructure. They define a minimum baseline of quality and workmanship for installing electrical products and systems. The proposed Multi Bundled (Mini & Micro) HDPE Ducts & DWC Duct.

Standards for Monitoring Fiber Optic Cable Ducts



Recommended technical requirements are detailed by reference to IEC 60794-3-11 on outdoor optical fibre cables for duct, directly buried, and lashed aerial applications. Changes and additions to these ...



4.3.1: Before proceeding, verify that the fibre duct is firmly secured to the designated support structures (e.g., brackets, cable trays, or wall mounts) The duct should be level, properly ...



Fiber optic cable sequential numbers are required at each pole location and vault wall. Sequential numbers will identify conduit length, and slack left in vaults and at poles.



Get a complete guide to fiber optic & related products standards—from basics to advanced, covering all key details for full understanding.



Fiber optic cable is subject to damage if the cable's specified maximum tensile force is exceeded. Except for short runs or hand-pulls, tension must be monitored.



Support structures for fiber optic cable installations should be completed before the installation of the fiber optic cable itself. Outside plant structures should be installed in conformance with all permits ...



5.1.1 The Multi Bundled (Mini & Micro) HDPE Ducts & DWC with its accessories shall be compatible with the latest installation standards and maintenance practices for the telecommunication's duct system.



These standards provide clear guidelines for routing, dressing, and securing fiber optic cable in structured cabling systems. Frequent moves and changes are common in active network ...



Although most fiber optic cables are not conductive, any metallic hardware used in fiber optic cabling systems (such as wall-mounted termination boxes, racks, and patch panels) must be grounded.



These standards describe procedures and equipment for the installation and validation of fiber optic cables that carry signals for communications, security, device monitoring, and similar purposes.



This specification covers the minimum requirements for the laying, joining and testing of HDPE (High Density Polyethylene) Duct for Optical Fibre Cable (OFC) either by open cut methods or by ...

Contact Us

For more information, pricing, or custom network solutions, please contact us:

Website: <https://hashherbcafe.co.za>

Email: hello@hashherbcafe.co.za

Phone: +27 63 814 7295

Address: 15 Galaxy Road, Linbro Business Park, Johannesburg, 2065, South Africa

This document is for informational purposes only. Specifications subject to change without notice.

