


Standard wiring method for double-layer distribution boxes




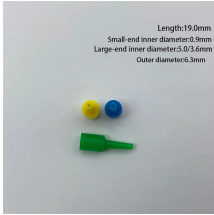
Overview


Multicore cables on racks or trays may be bunched in a maximum of two layers. Correct wiring methods for circuit breakers within distribution boxes are fundamental to ensuring electrical safety and compliance with established codes. This guide shows you how to organize circuit breaker wiring properly. Circuit breaker wiring configurations involve organizing main switches, busbars. Metal raceways, cable armor, and other metal enclosures for conductors shall be metallically joined together into a continuous electric conductor and shall be so connected to all boxes, fittings, and cabinets as to provide effective electrical continuity.


Standard wiring method for double-layer distribution boxes

	<p>Residents have strong feelings about refuse — including the fact that there never seems to be anywhere to put it.</p>
---	--

	<p>Received an invitation for online banking?</p>
---	---

	<p>Correct wiring methods for circuit breakers within distribution boxes are fundamental to ensuring electrical safety and compliance with established codes. ...</p>
--	---

	<p>A standard is an authoritative principle or rule that usually implies a model or pattern for guidance, by comparison with which the quantity, excellence, correctness, etc., of other things may be determined: ...</p>
---	--

	<p>To define the current carrying capacity of the conductor and therefore to identify the correct cross section for the load current, the standardized method of installation that better suits the actual ...</p>
---	--



Ensuring that the balanced current goes through all cables is possible by the right phase sequence and the correct arrangement of the cables, given the magnetic field interaction and impedances between ...



Correct wiring methods for circuit breakers within distribution boxes are fundamental to ensuring electrical safety and compliance with established codes. The distinction between 1P and 2P ...



A standard language is a variety of language that is used by governments, in the media, in schools and for international communication. There are different standard varieties of English in the world, such ...



The provisions of paragraph (a) (2) of this section apply to temporary electrical power and lighting wiring methods which may be of a class less than would be required for a permanent installation.



We provide insurance, retirement and investment products and services. Work with our team of remarkable people united by compassion and a genuine desire to help others.



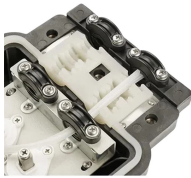
Find a Standard Plumbing Supply store near you with the SPS store locator. Get contact information, address, map, hours of operations, available services and more.



Wiring Direction: Wiring between the main circuit breaker and each branch circuit breaker in the box generally goes on the left, and the wiring out of the distribution box generally goes on the ...



It joins Standard's award-winning portfolio of training programs, which include Standard® Pro Training On-Site and Live-Virtual training sessions, an On-Demand library, and a Masters Series.



The Standard ecosystem spans continents and industries, from world-class building solutions to performance materials, logistics, real estate, and investments in public and private companies across ...



Exceptional Student Living Calling The Standard at Los Angeles home means leaving behind the cramped, outdated student housing of the past. Our USC apartments offer a new standard with ...



A typical method of making final terminations to enclosures is to leave excess cable in a loop configuration to relieve any potential undue strain on the cable gland, and allow easier modifications ...



METHOD STATEMENT FOR Electric panel and distribution box installation and termination - Free download as PDF File (.pdf), Text File (.txt) or read online for free. This document provides a method ...



Ensuring that the balanced current goes through all cables is possible by the right phase sequence and the correct arrangement of the cables, given the magnetic ...



Abstract: The design, installation, and protection of wire and cable systems in substations are covered in this guide, with the objective of minimizing cable failures and their consequences.



TITLE BLOCKS ARE USED TO HOLD INFORMATION ABOUT THE BOOK, SECTION, AND STANDARD AND ARE LOCATED AT THE BOTTOM OF THE PAGE. "APPROVAL" REFERS TO ...



Master the safest and most efficient circuit breaker wiring configurations. Learn about single-phase vs. three-phase setups, safety standards, and future-proof electrical planning.



standard, criterion, gauge, yardstick, touchstone mean a means of determining what a thing should be. standard applies to any definite rule, principle, or measure established by authority.



Master the safest and most efficient circuit breaker wiring configurations. Learn about single-phase vs. three-phase setups, safety standards, and future-proof electrical ...

Contact Us

For more information, pricing, or custom network solutions, please contact us:

Website: <https://hashherbcafe.co.za>

Email: hello@hashherbcafe.co.za

Phone: +27 63 814 7295

Address: 15 Galaxy Road, Linbro Business Park, Johannesburg, 2065, South Africa

This document is for informational purposes only. Specifications subject to change without notice.

