

Special Optical Cable G 657A2 in Stock



Special Optical Cable G 657A2 in Stock



Find out all of the information about the TELMOR product: compensation optical cable GJXFH 2J SM G.657A2 . Contact a supplier or the parent company directly to get a quote or to find out a price or ...



Eliminate OTDR dead zones with this rugged 1,000 m launch cable housed on a compact, magnet-mounted reel. It is engineered for field use and delivers reliable G.657A2 performance and seamless ...



This bulk loose tube fiber cable is outdoor rated. It is OSP rated for outside plant environments. Its loose tube design offers reliable transmission performance over a broad temperature range. Optical fibers ...



GL FIBER focuses on optical fiber OEM production services, and is committed to providing customers with brand customization, personalized packaging design, optimal cable structure design, and the ...



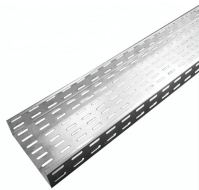
Item description from the seller OFS Furukawa 6.1 M Minicord Allwave Flex+ Enhanced Bif Optical Cable G657A2



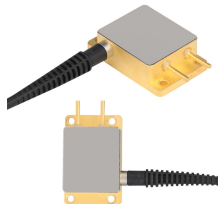
The color-coded, tightly buffered fibers are reinforced with aramid yarn for greater ...



2x5mm Outdoor FTTH 2 Core G657A1 G657A2 Aerial Flat Drop Cable manufactured by ANC International Co., Limited is used externally on buildings or for residential applications.



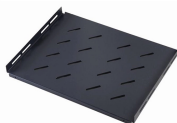
This OS2 fibre patch cable is ideal for connecting 1G/10G/25G/40G/100G/400G Ethernet connections. It is best suited for long distance application and can transport data for up to 10km at 1310nm, or up to ...



FTTH cables are ideal for indoor cabling, end users directly cabling, and access network. The optical fiber unit is positioned in the center. Two parallel Fiber Reinforced Plastics (FRP) are placed at the ...



Not only that, the mode field diameter (MFD) of the fiber is consistent with the standard G.652 single-mode fiber, which makes it have low connection loss with G.652 optical bare fiber, including splice ...



The color-coded, tightly buffered fibers are reinforced with aramid yarn for greater weather resistance and LSZH-sheathed. This cable, meeting G.657.A2 standard (production in G.657.B3 possible on ...

Contact Us

For more information, pricing, or custom network solutions, please contact us:

Website: <https://hashherbcafe.co.za>

Email: hello@hashherbcafe.co.za

Phone: +27 63 814 7295

Address: 15 Galaxy Road, Linbro Business Park, Johannesburg, 2065, South Africa

This document is for informational purposes only. Specifications subject to change without notice.

