

## Spacing between cable management racks and patch panels



### Overview

The most effective strategy for cable organization is to place your network patch panel directly adjacent to the switch it serves. This article will help you understand their roles, differences, and how they work together to improve the overall efficiency and organization of your cable system. Before we explore, similarities and differences with specific cable management needs that must be addressed. It is important to follow all groups or in loops may create electromagnetic interference (EMI) due to induction. EMI can cause errors in data transmission over these cables. This guide distills field-tested techniques from hyperscale deployments and enterprise campuses. Select patch panels are available in a standard White color option. Modular patch panels accept all Mini-Com® Modules in. A patch panel in a local area network (LAN) is a mounted hardware assembly that contains ports that are used to connect and manage incoming and outgoing LAN cables.

## Spacing between cable management racks and patch panels



High-density patch panels are an ideal solution for installations with space constraints, are available in flat and angled designs, with 48 ports in one rack space and 72 ports in two rack spaces.



In this article we will talk about network cabinets, patch panels and cable management. A patch panel in a local area network (LAN) is a mounted ...



Typically these cabinets would be configured in a manner using rack mount patch panels and cable managers along with vertically mounted cable managers to provide pathways for patch cords ...



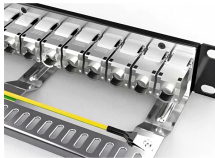
In this article we will talk about network cabinets, patch panels and cable management. A patch panel in a local area network (LAN) is a mounted hardware assembly that contains ports that ...



Compare 24-port and 48-port patch panels by rack space, cable management, scalability, maintenance and project cost. Learn which patch panel is better for office networks, telecom rooms ...



Many Westchester homes share a utility closet between the network rack and the main electrical panel. Keep data cables at least 6 inches from the panel enclosure and cross any ...



Our guide delivers actionable, step-by-step best practices for rack layout, cable management, and patch panel installation. Following these steps helps you build a clean and ...



Discover the difference between a cable manager and a patch panel, their roles in cable management, and how they aid to keep your network organized and efficient.



This article explains the differences between cable managers and patch panels, and how to use them together to optimize cable management.



If the cables are routed from the floor and enter the cabinet from the bottom, the patch panel should be installed in the lower part of the cabinet. If the cables are routed overhead and enter the cabinet from ...



How much cable management space should I allocate per rack unit of equipment? The industry best practice is 1:1 — for every 1U of active equipment (switches, servers), allocate 1U of ...

## Contact Us

For more information, pricing, or custom network solutions, please contact us:

Website: <https://hashherbcafe.co.za>

Email: [hello@hashherbcafe.co.za](mailto:hello@hashherbcafe.co.za)

Phone: +27 63 814 7295

Address: 15 Galaxy Road, Linbro Business Park, Johannesburg, 2065, South Africa

This document is for informational purposes only. Specifications subject to change without notice.

